

Wolf Road

Best Western

I-87 (Northway) Northbound

I-87 (Northway) Southbound

Desmond Hotel

Existing Exit 4
Off Ramp to Wolf Road

New Exit 3 Southbound
On Ramp

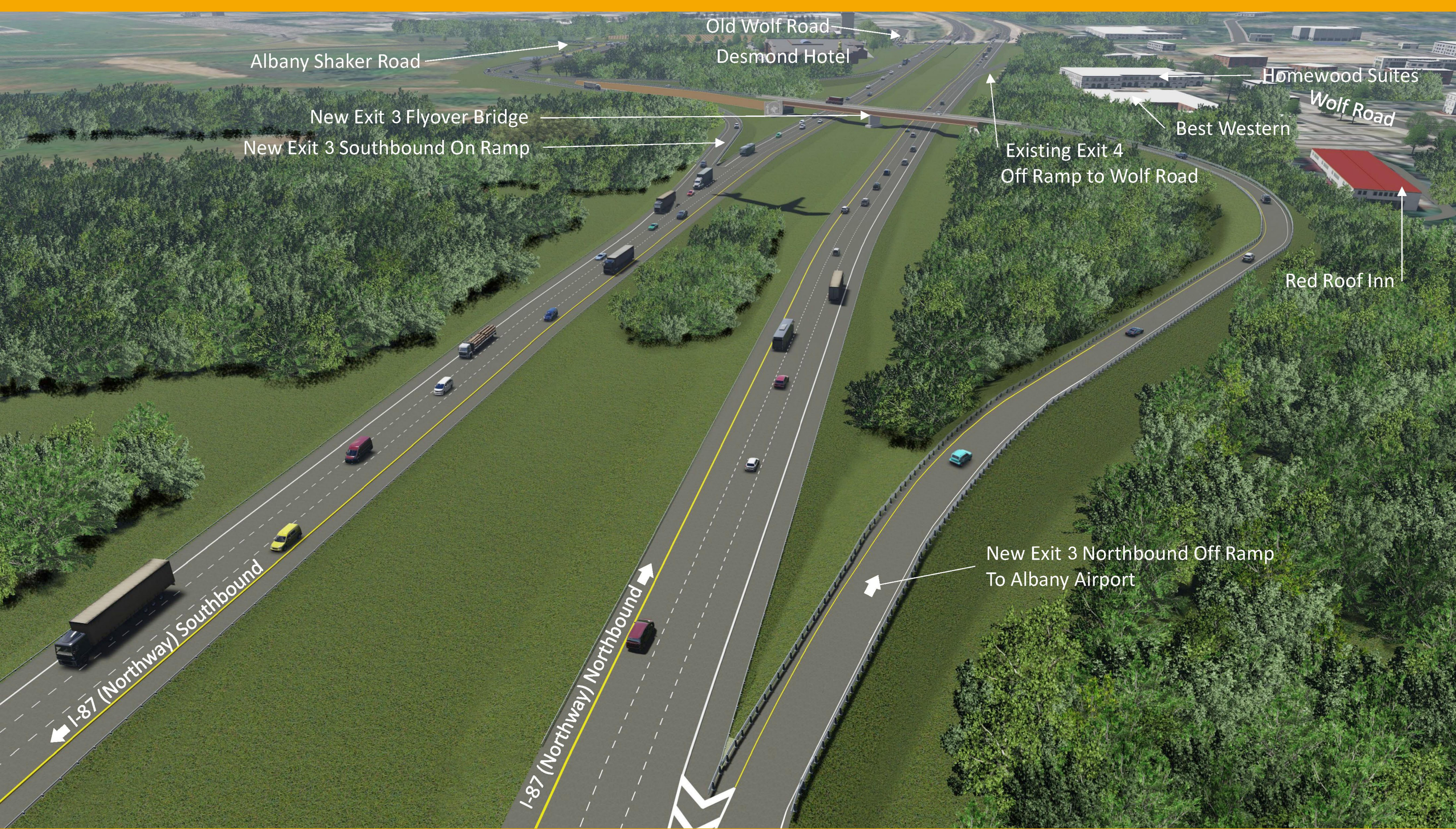
New Cross Culvert

New Exit 3 Flyover Bridge

New Multiuse Path
to Airport / Ann Lee Pond
Preserve

Interpretive Sign
and Seating Area

New Albany Shaker Road/
Exit 3 Intersection



Albany Shaker Road

Old Wolf Road
Desmond Hotel

New Exit 3 Flyover Bridge
New Exit 3 Southbound On Ramp

Existing Exit 4
Off Ramp to Wolf Road

Homewood Suites
Wolf Road
Best Western

Red Roof Inn

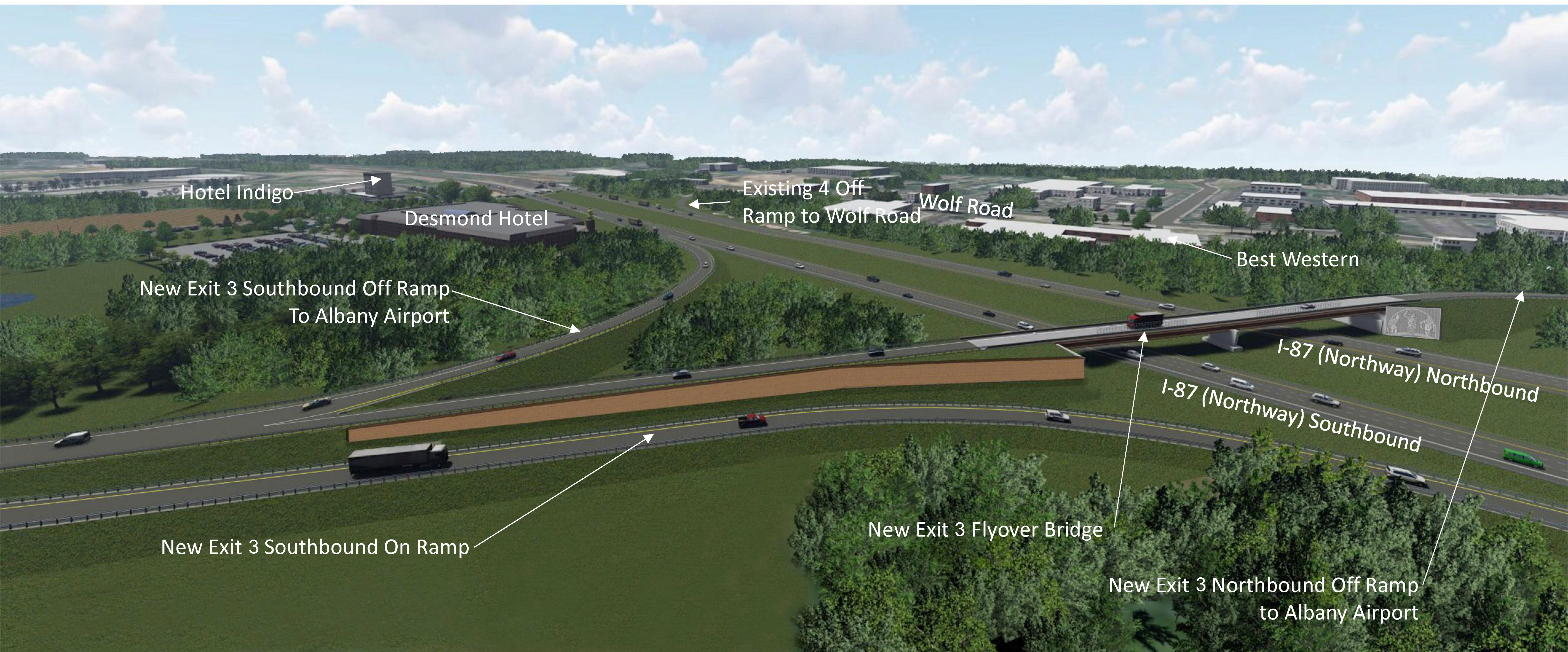
I-87 (Northway) Southbound

I-87 (Northway) Northbound

New Exit 3 Northbound Off Ramp
To Albany Airport









Existing Exit 4
Off Ramp to Wolf Road

Wolf Road

Best Western

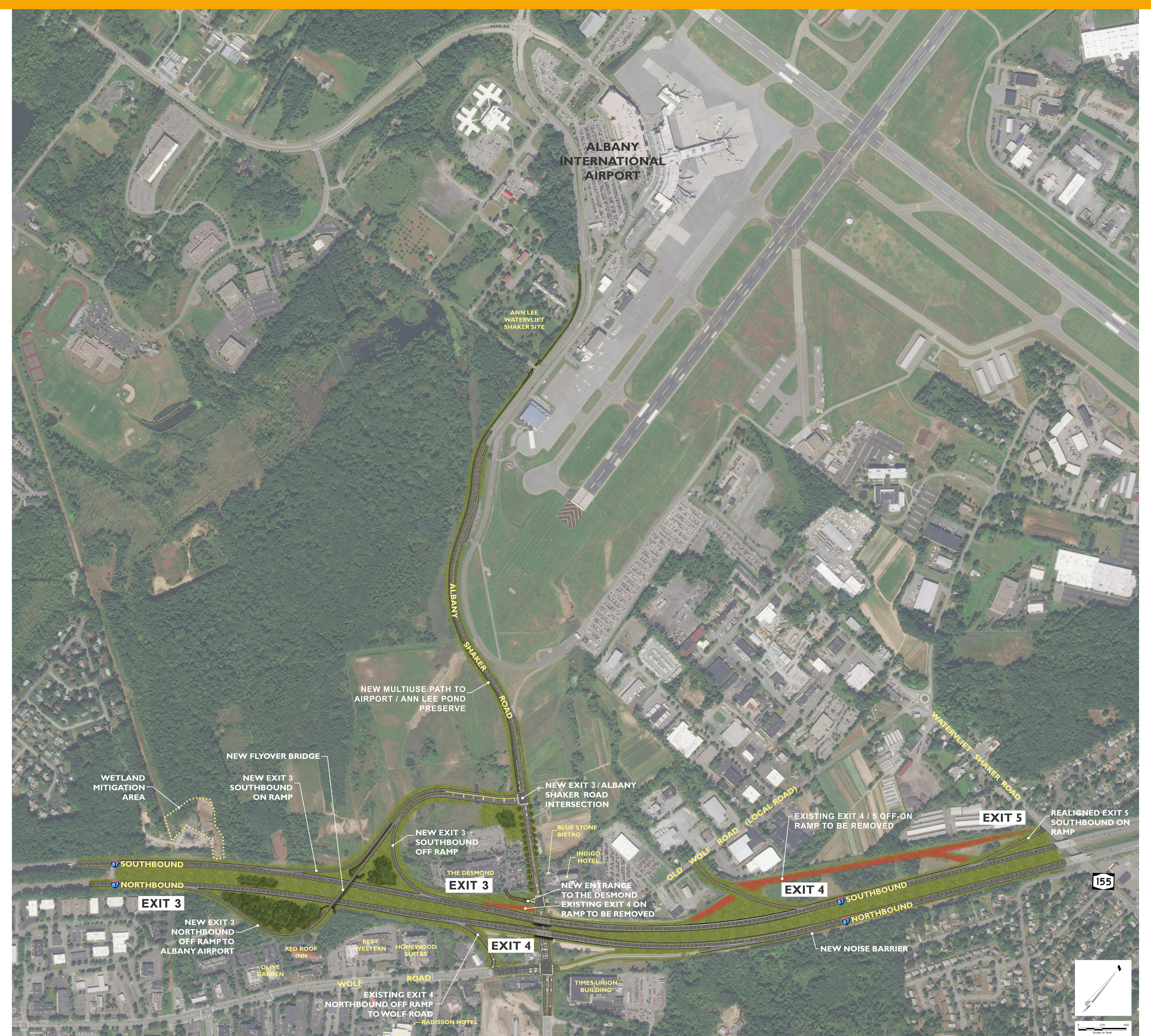
I-87 (Northway) Northbound

I-87 (Northway) Southbound

New Exit 3 Flyover Bridge

New Exit 3 Northbound Off Ramp
to Albany Airport







EXIT 3
155
Albany Int'l
Airport
1 1/4 MILE

EXIT 4
Old Wolf Road
1/2 MILE

EXIT 5
155
Latham
EXIT ONLY

EXIT
40
M.P.H.



Department of
Transportation

MARIE THERESE DOMINGUEZ
Commissioner

VIEW LOOKING SOUTH TOWARD
EXIT 5 SOUTHBOUND OFF RAMP

I-87 EXIT 3 ACCESS IMPROVEMENT PROJECT



Office of the
Governor

ANDREW M. CUOMO
Governor



