

Objective 1: Tree Canopy Change Methodology Comparisons

September 4, 2019 : LUWG

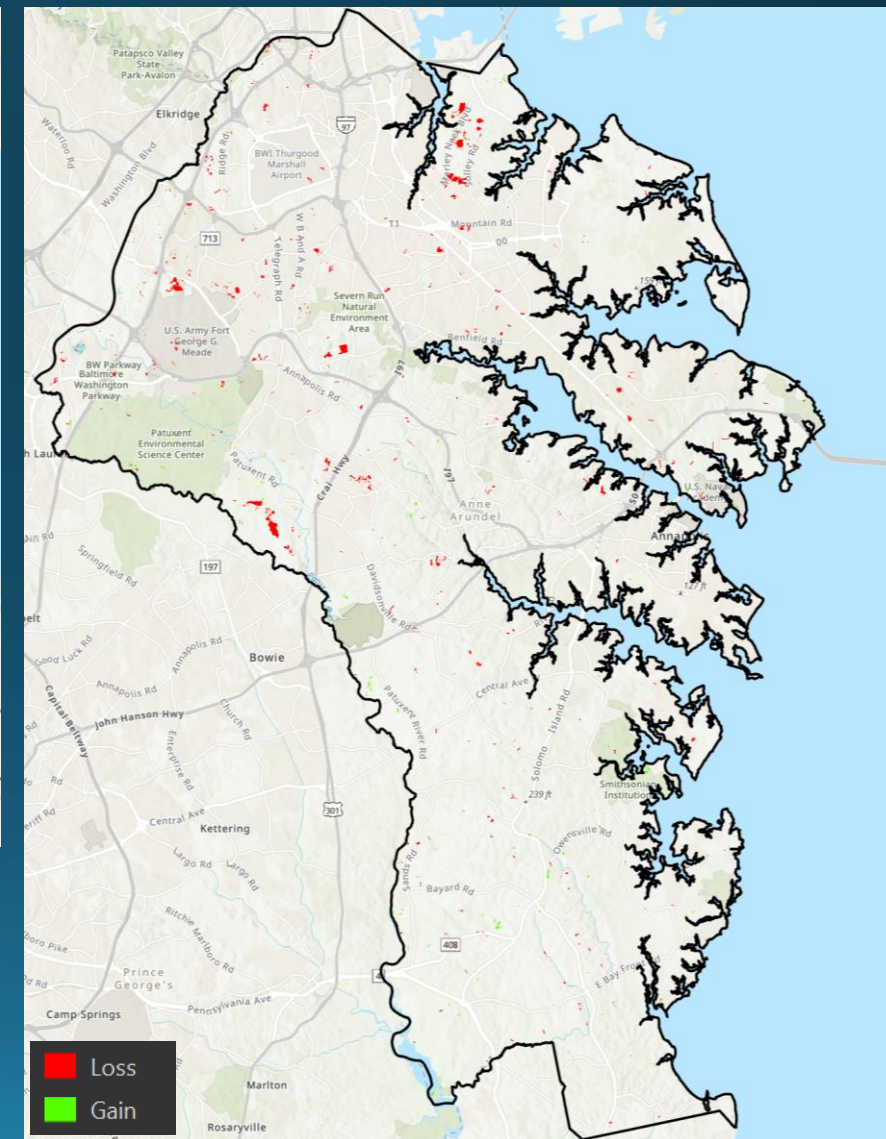
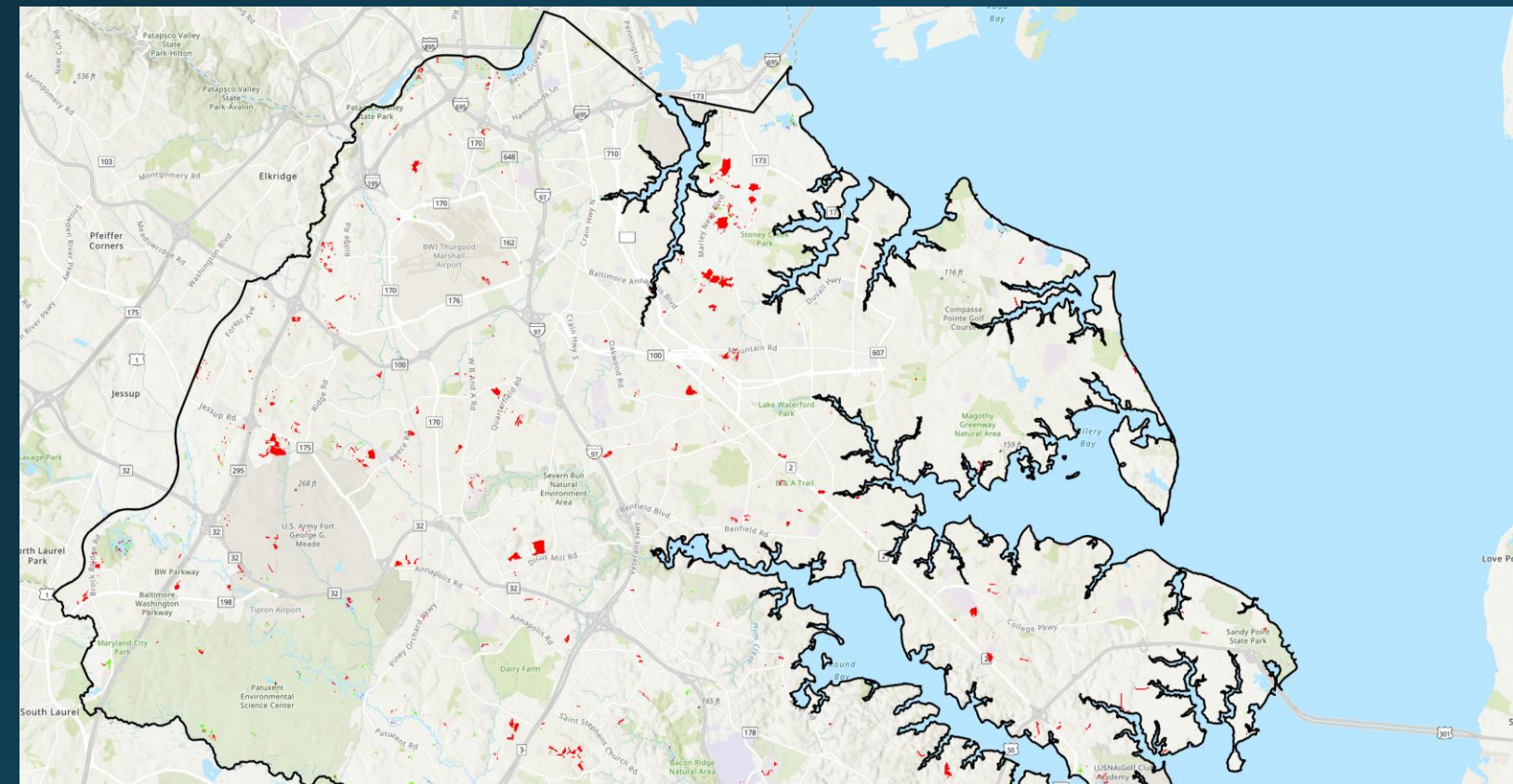
Rachel Soobitsky

rsoobitsky@chesapeakeconservancy.org

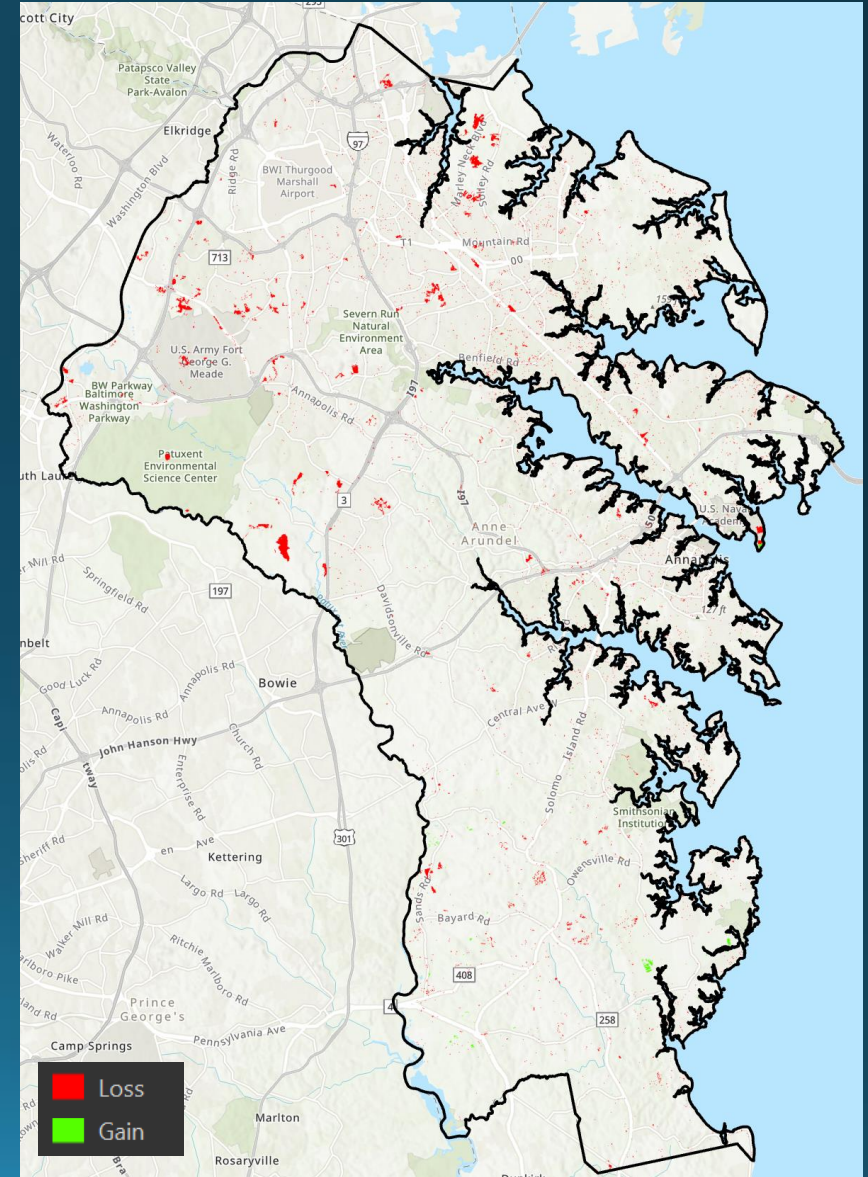
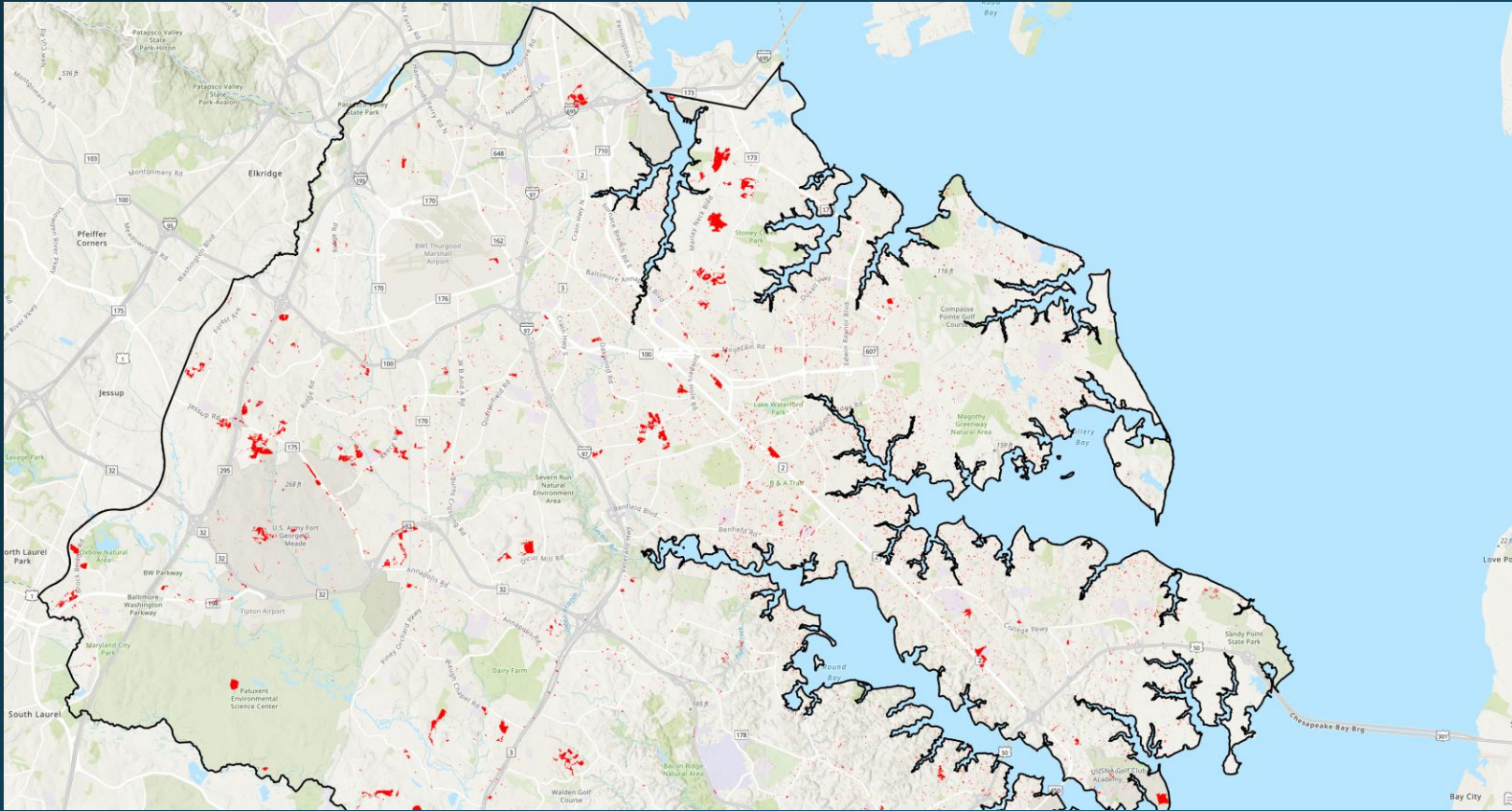
Anne Arundel Tree Canopy Change Methodology Comparison

- NLCD (30-meter)
- Wall-to-wall LC change (1-meter)
- Hot Spot LCMAP change (1-meter within 30-meter hot spot)

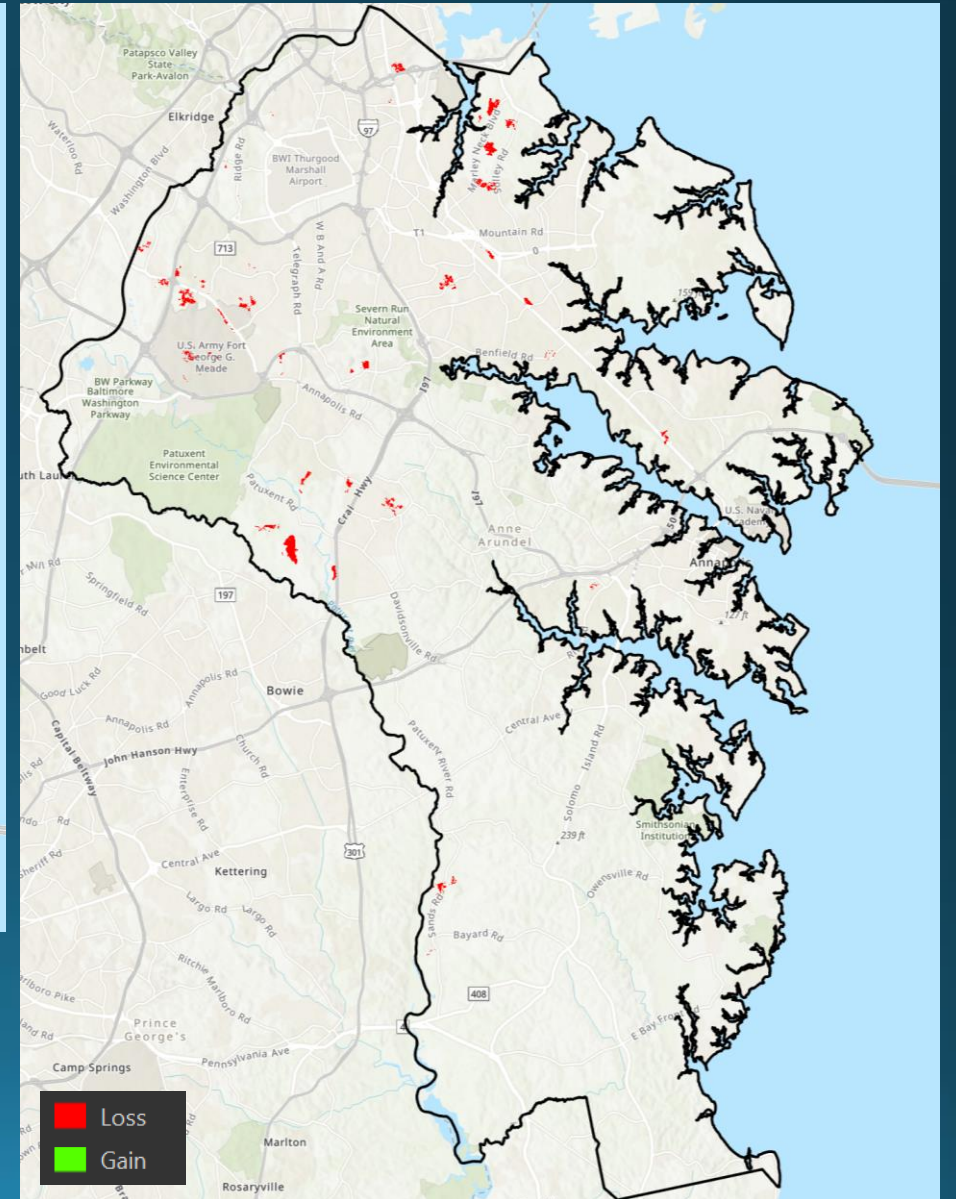
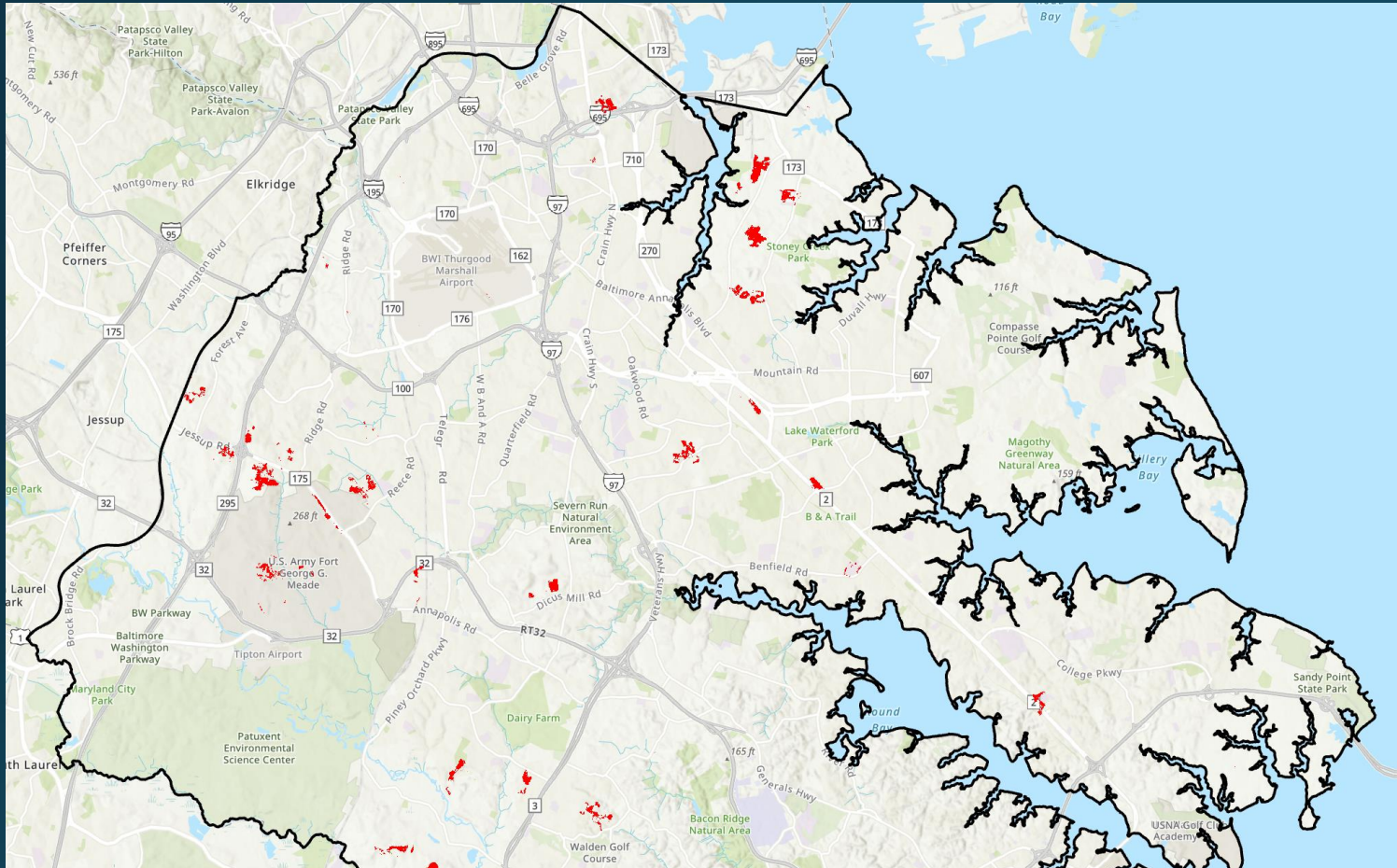
NLCD 2013-2016



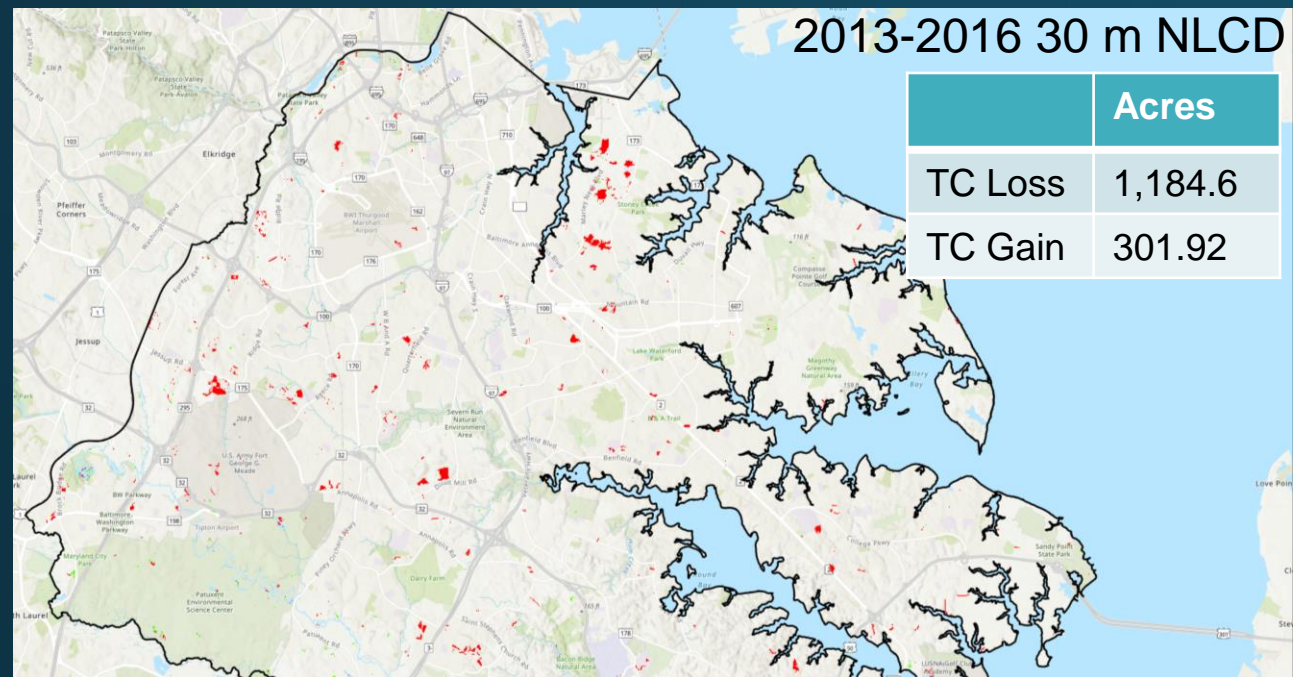
Wall-to-wall LC change (2013-2017)



Hot Spot LCMAP change (2013-2017)

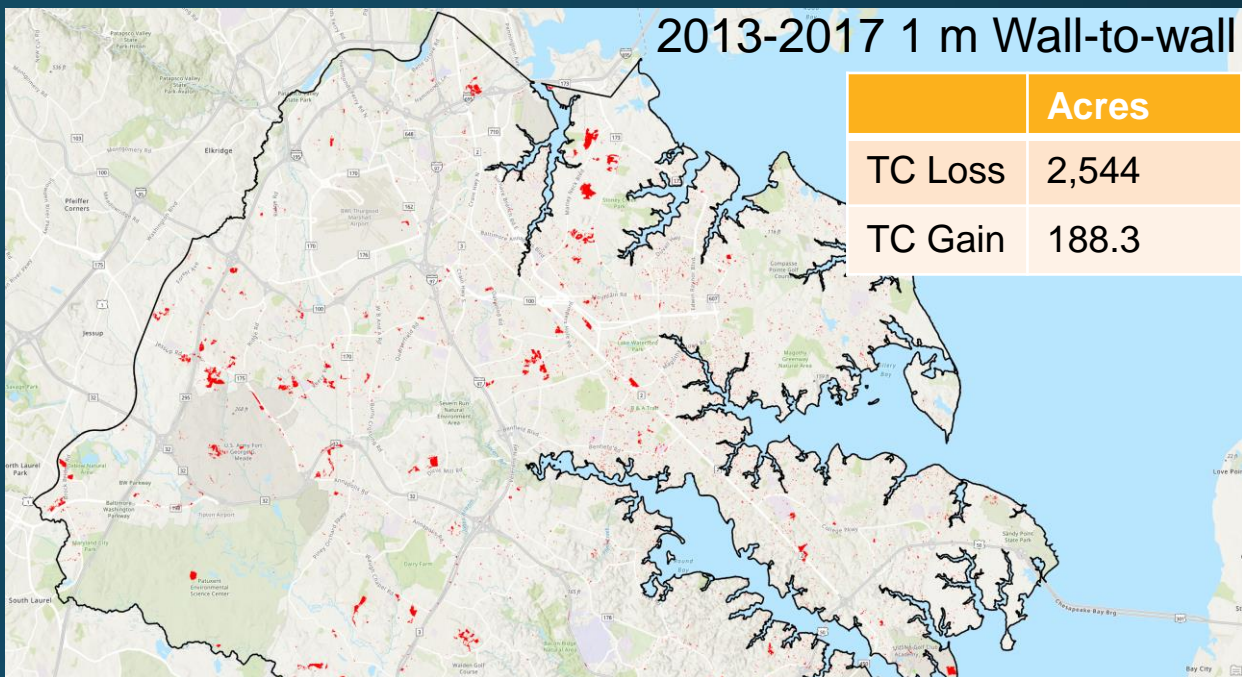


2013-2016 30 m NLCD



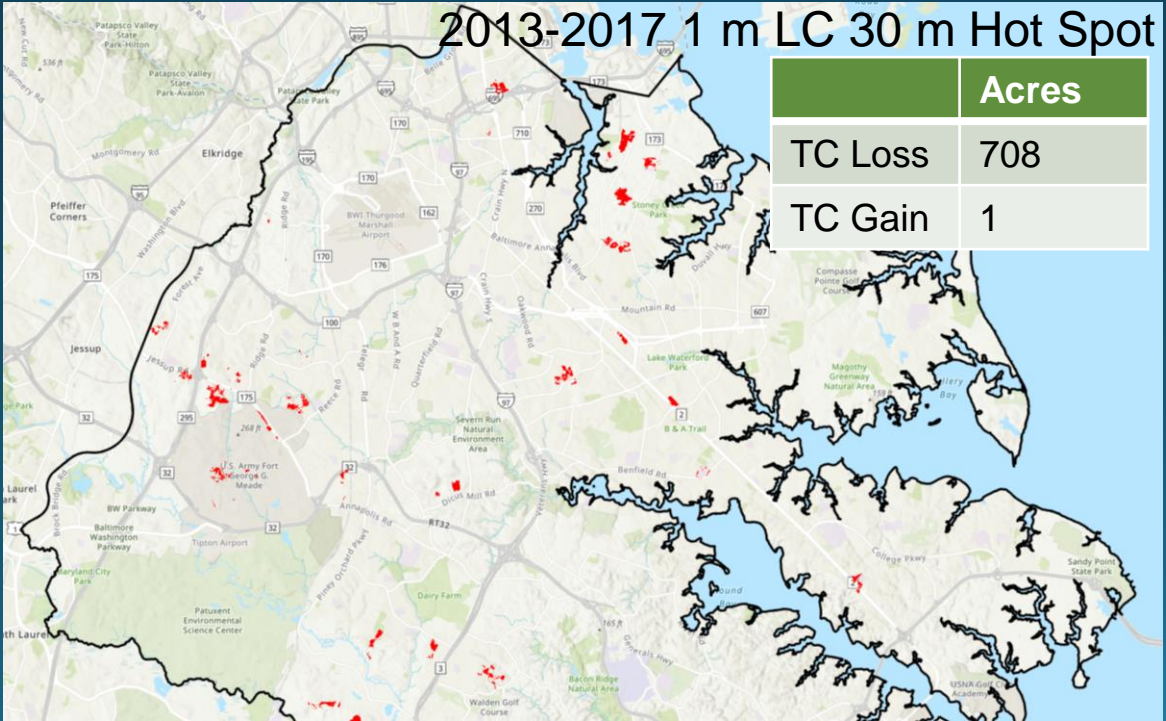
	Acres
TC Loss	1,184.6
TC Gain	301.92

2013-2017 1 m Wall-to-wall



	Acres
TC Loss	2,544
TC Gain	188.3

2013-2017 1 m LC 30 m Hot Spot



	Acres
TC Loss	708
TC Gain	1

■ Loss
■ Gain

2017



1 m LC 30 m Hot Spot



Questions?

rsoobitsky@chesapeakeconservancy.org