

# Dual Enrollment Virtual Open House

Join us for a presentation about the four Dual Enrollment (DE) programs for Frederick County high school students.

*Choose one of the following dates to attend:*

**Wednesday, December 8, 2021**

**Thursday, January 6, 2022**

**Tuesday, February 8, 2022**

*All sessions will be held:*

**7:00 - 8:00 p.m. via Google Meet**



*Registration is required to attend.*

*Students and parents can register at:*

**[tinyurl.com/FCCDualEnrollment](https://tinyurl.com/FCCDualEnrollment)**

Contact the Office of Dual Enrollment for more information or questions:

**[frederick.edu/DE](https://frederick.edu/DE) • 301.624.2893**

**[dualenrollment@frederick.edu](mailto:dualenrollment@frederick.edu)**



Frederick Community College • 7932 Opossumtown Pike • Frederick, MD 21702

Frederick Community College prohibits discrimination against any person on the basis of age, ancestry, citizenship status, color, creed, ethnicity, gender identity and expression, genetic information, marital status, mental or physical disability, national origin, race, religious affiliation, sex, sexual orientation, or veteran status in its activities, admissions, educational programs, and employment. Frederick Community College makes every effort to accommodate individuals with disabilities for College-sponsored events and programs. If you have accommodation needs, please call 301.846.2408. To request a sign language interpreter, please call 240.629.7819 or 301.846.2408 (Voice) or email [Interpreting@frederick.edu](mailto:Interpreting@frederick.edu). Sign language interpreters will not be automatically provided for College-sponsored events without a request for services. To guarantee accommodations, requests must be made at least five workdays in advance of a scheduled event. If your request pertains to accessible transportation for a College-sponsored trip, please submit your request at least two weeks in advance. Requests made less than two weeks in advance may not be able to be provided.

## DE @ FCC

**Your goals determine which option is best for you.**

*Contact the DE Office or your school counselor for more information on each program or to enroll.*



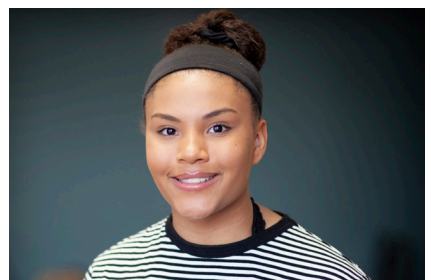
**High School Based**



**Open Campus**



**Career Pathways**



**Early College**