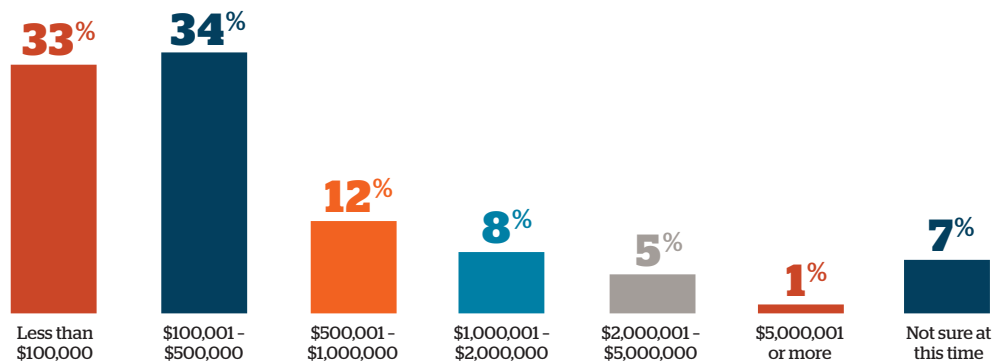


# Association Impact Snapshot COVID-19

The **ASAE Research Foundation** studied how COVID-19 has impacted our community. According to a survey of association executives:

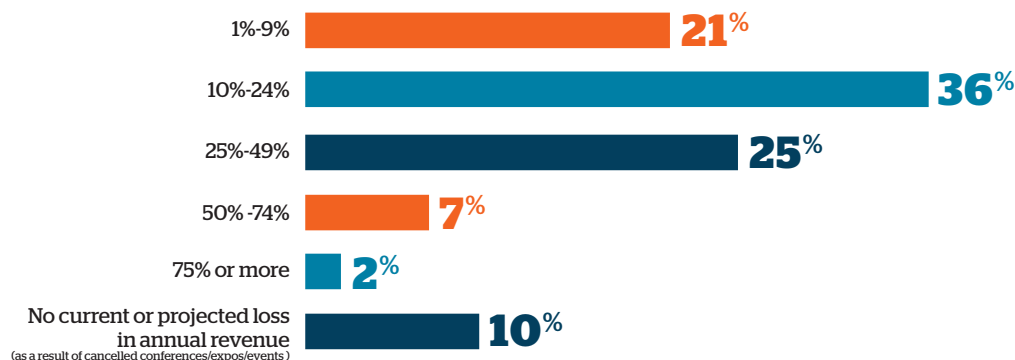
## ESTIMATED REVENUE LOSS FROM EVENT CANCELLATIONS

Estimated percentage of total annual revenue loss associations anticipate as a result of cancellations or modifications to any in-person conferences/expos/events due to the current global health crisis (regardless of any aid, such as, insurance coverage or government benefits, etc.).



## ESTIMATED PERCENT OF REVENUE LOSS FROM EVENT CANCELLATIONS

Estimated percentage of total annual revenue loss associations anticipate as a result of cancellations or modifications to any in-person conferences/expos/events due to the current global health crisis (regardless of any aid, such as, insurance coverage or government benefits, etc.).



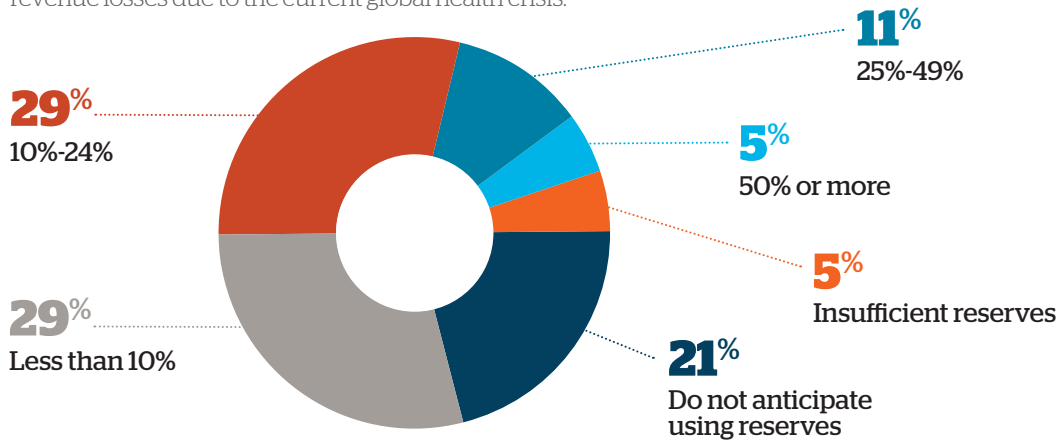
**Associations Urgently Need Support in the Next COVID-19 Relief Measure**

# Association Impact Snapshot COVID-19

The **ASAE Research Foundation** studied how COVID-19 has impacted our community. According to a survey of association executives:

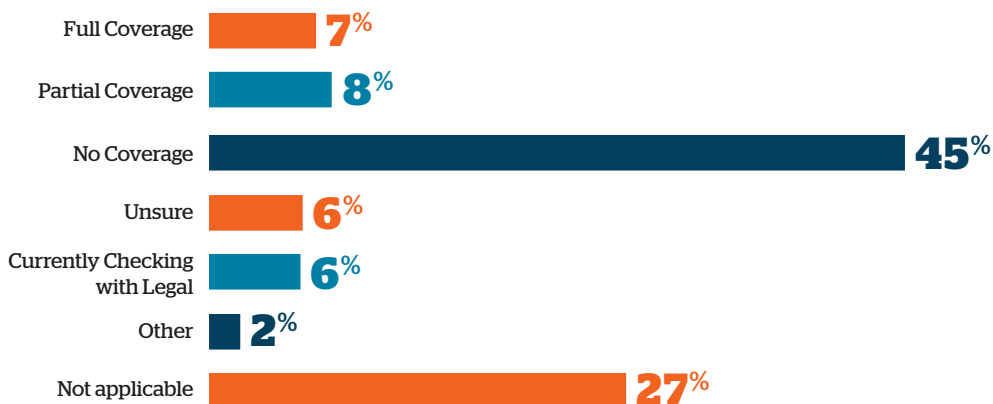
## ESTIMATED RESERVE FUNDS NEEDED TO COVER LOSSES

Percentage of reserves associations anticipate using to offset revenue losses due to the current global health crisis.



## EVENT INSURANCE COVERAGE

Anticipated extent of insurance policy coverage for cancellations or modifications to any in-person conferences/expos/events due to the current global health.



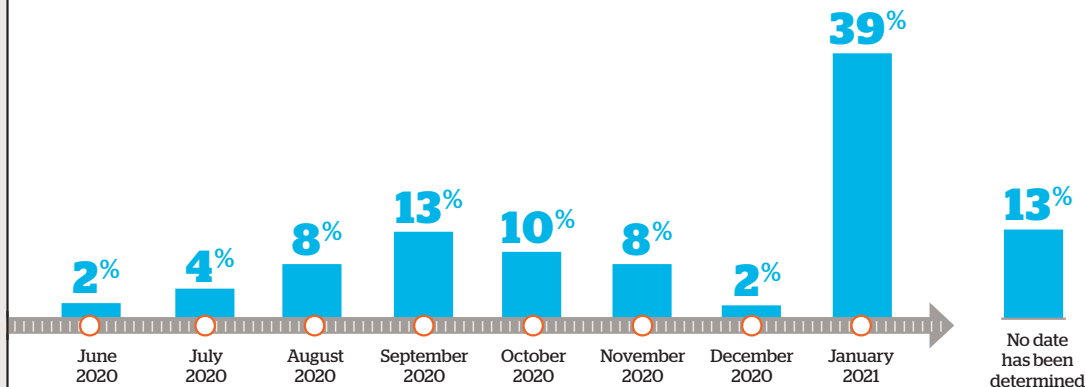
**Associations Urgently Need Support in the Next COVID-19 Relief Measure**

# Association Impact Snapshot COVID-19

The **ASAE Research Foundation** studied how COVID-19 has impacted our community. According to a survey of association executives:

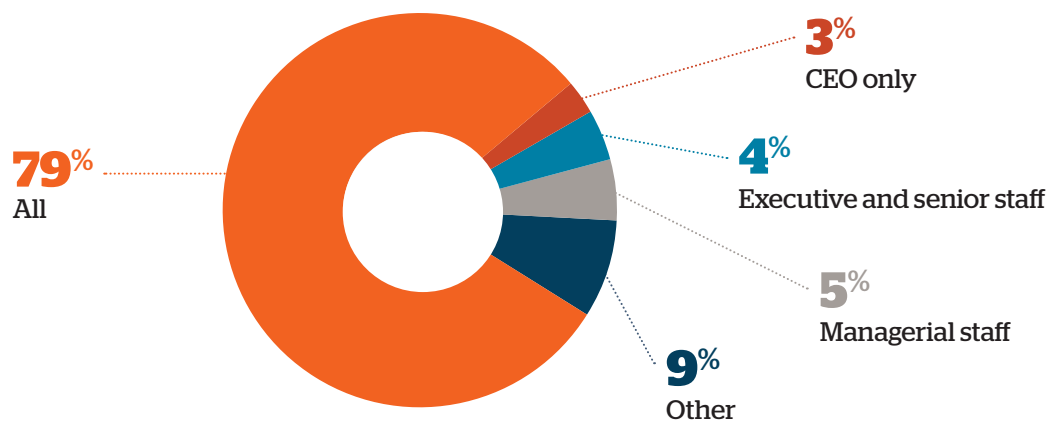
## ESTIMATED TIMELINE TO RESUME IN-PERSON EVENTS

Earliest date associations anticipate resuming in-person programs based on what we currently know about the global health crisis.



## IMPACT ON STAFF

Estimate of which level of association personnel will be most impacted due to operational disruptions.



Associations Urgently Need Support in the Next COVID-19 Relief Measure