



TODAY'S TOP 3 TRADES

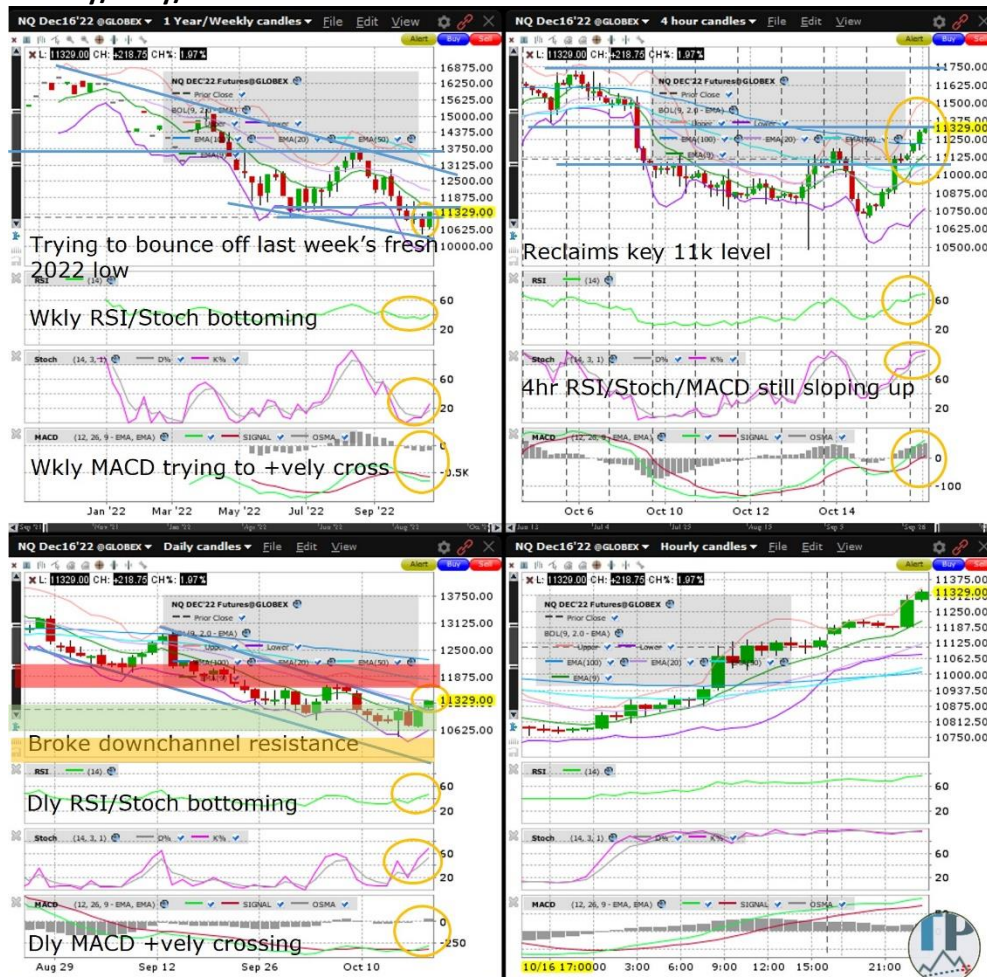
Oct 18, 2022

INDICES (NASDAQ100, S&P500) + TODAY'S TOP TRADE (SILVER)

NASDAQ100 (NQ)

Nasdaq100 (NQ) is extending yesterday's strong ~3% rebound, breaking above downchannel resistance (on the daily chart). NQ appears to be in the early stages of what will likely be a month long or so Dead Cat Bounce. Odds are moderately high for a test of the weekly chart downtrend resistance by November sometime. Any slide back below the last week's fresh 2022 low (at ~61.8% Fib retrace of the April 2020 to November 2021 bull market extension) will probably have to wait until December. Watch for some healthy profittaking once NQ bumps against the October high, and triggered potentially by Thursday's US Philly Fed manufacturing index. The escalation in the Ukraine-Russia conflict deserves close monitoring. [Congratulations to Premium Subscribers who benefited from the Jan 18, 2022 warning of the NQ keeling over on a monthly chart, the alert February 18th, 2020 one day before the record high in the S&P500, warning of a pending slide in the Nasdaq100 and from the March 24th, 2020 report highlighting the looming multi-day to multi-week rebound in NQ.](#) The weekly, daily and 4hr RSI, Stochastics and MACD are bottomish or rallying. I am looking to enter long in the green zone (of the daily chart), targeting the red zone for Monday. The amber/yellow zone is where I might place a stop if I was a swing trader (although in my personal account with which I seldom hold overnight I sometimes set my stops tighter).

Weekly/Daily/4hr



Darren Chu, CFA

Founder

Tradable Patterns



Join the world's largest asset manager and 2 of the world's 5 largest (and 5 of the 10 largest) hedge funds by AUM as daily readers of [Tradable Patterns'](#) technical analysis. As seen on Bloomberg, Refinitiv, Factset, Interactive Brokers, readers include global top 10 investment banks. **If you represent an institutional investor or potential distribution partner, write to info@tradablepatterns.com to request Bloomberg, Refinitiv and Factset readership reports.**



Bloomberg

REFINITIV

FACTSET

FINANCIAL TIMES

ALPHAVILLE



S&P500 (ES)

The S&P500 (ES) is pushing higher after yesterday's 2.5% plus rebound, quickly nearing the October high. Odds are suddenly moderately high for a Dead Cat Bounce to continue for much of November, and for a test of the psychologically key 4k whole figure level sometime before month end. Nevertheless, the current Dead Cat will likely be weaker in magnitude relative to the late June-late August one. Watch for some healthy profittaking once NQ bumps against the October high, and triggered potentially by Thursday's US Philly Fed manufacturing index. The escalation in the Ukraine-Russia conflict deserves close monitoring. [Congratulations to paying subscribers who benefited from the February 18, 2020 analysis one day before the record high in the ES, warning of the pending slide in the S&P500.](#) The weekly, daily and 4hr RSI, Stochastics and MACD are bottomish or rallying. I am looking to enter long in the green zone (of the daily chart), targeting the red zone for Monday. The amber/yellow zone is where I might place a stop if I was a swing trader (although in my personal account with which I seldom hold overnight I sometimes set my stops tighter).

Weekly/Daily/4hr



InteractiveBrokers

barchart

amazon

cna

THE GLOBE AND MAIL

ZeroHedge

Bloomberg

Liquid by Quoine

YouTube

SFA SINGAPORE FINTECH ASSOCIATION

SILVER (SI)

Silver (SI) is trying to add to yesterday's rebound and halt the slide since the October high. Any break above the 4hr chart downchannel resistance will dramatically reduce the likelihood of SI retesting the 2022 low before month end. In the meantime, the still sizeable gap between the descending wedge support and resistance (on the weekly chart) suggests an elevated risk of sliding back to wedge support at least one more time as part of the major bottoming effort. Conversely, any break back above the psychologically key 20 whole figure level will likely be followed by a test of the October high in the few days after. Watch for volatility with Thursday's US Philly Fed manufacturing index, and with further escalation in the Ukraine-Russia conflict. [Congratulations to readers who heeded the warning December 16, 2020 of SI's breakout above its daily chart downchannel resistance and who benefited.](#) The weekly, daily and 4hr RSI, Stochastics and MACD are mostly bottomish or rallying. I am looking to enter long in the green zone (of the daily chart), targeting the red zone for Monday. The amber/yellow zone is where I might place a stop if I was a swing trader (although in my personal account with which I seldom hold overnight I sometimes set my stops tighter).

Weekly/Daily/4hr



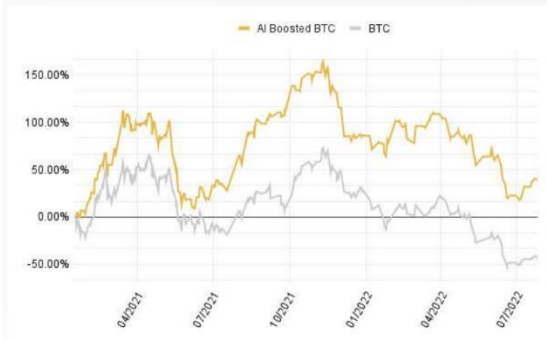
Write to info@tradablepatterns.com to learn about how Institutional/Accredited Investors can gain access to:

- 1) Neural network AI-based crypto exposure
- 2) Deeply discounted listed tokens
- 3) High growth Seed to Series B stage equity and convertible debt opportunities within tech (mostly blockchain/crypto-related)

4) Difficult to access Seed stage token rounds for blockchain/crypto startups w/ strong management teams and product-market fit

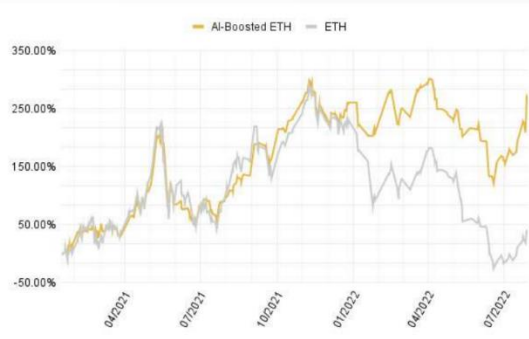
BTC 15.01.2021 - 25.07.2022
(18 months, 10 days)

+38.05% AI
-44.93% BTC



ETH 15.01.2021 - 30.07.2022
(18 months, 15 days)

+269.04% AI
+39.34% ETH



20+ months

Track Record Since
Nov 2020

120+

Customers
Worldwide

\$311.5M

Aggregated Trading
Volume





ETH:BUSD
Mar 24 – Jul 23, 2021
[Read details](#)

ROI

Duration
122 Days

Trades Made
227

Market Returns:
+17.55%
Difference:
+55.29%

AI Returns:
+72.84%
Excess returns / month:
+13.54%

Drawdown

Market Drawdown:
-58.34%
AI Drawdown:
-35.72%



LTC:USDT
Jan 13, 2022 – ...

ROI

Duration
>172 Days

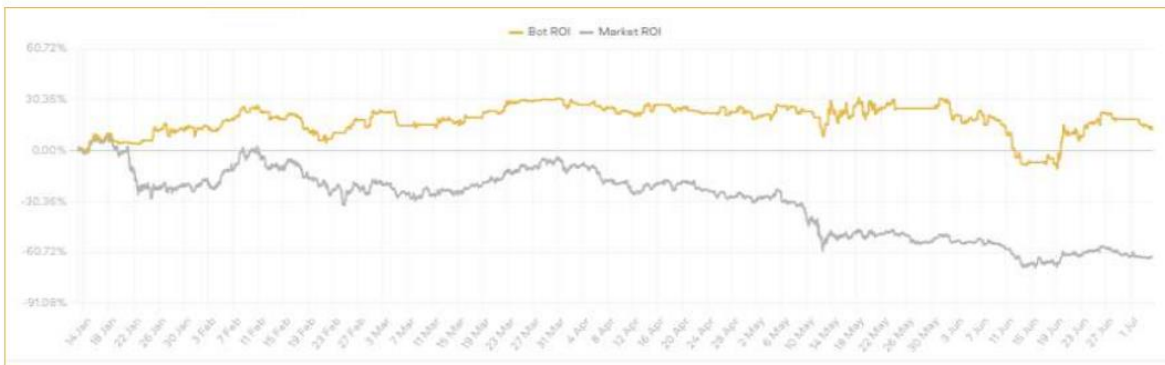
Trades Made
154

Market Returns:
-64.51%
Difference:
+76.80%

AI Returns:
+12.29%
Excess returns / month:
+13.35%

Drawdown

Market Drawdown:
-70.15%
AI Drawdown:
-29.92%



AI Performance: More Examples



XMR:USDT
Feb 22 – Jun 20, 2021
[Read details](#)

Duration
123 Days

Trades Made
143

Market Returns:
+14.06%
Strategy Returns:
+173.07%
Difference:
+159.01%



ETH:BUSD
Mar 24 – Jul 23, 2021
[Read details](#)

Duration
122 Days

Trades Made
227

Market Returns:
+17.55%
Difference:
+55.29%



TRX:USDT
Jan 10, 2022 – ...
[Read details](#)

Duration
>160 Days

Trades Made
94

Market Returns:
-13.08%
Strategy Returns:
+29.31%
Difference:
+42.39%





LTC:USDT
Jan 28, 2022 – ...

Duration
>146 Days

Trades Made
119

Market Returns: Strategy Returns:
-50.74% **+14.29%**

Difference: **+65.03%** Excess returns / month:
+13.54%



BTC:USD
Mar 23 – Jul 21, 2021

Duration
124 Days

Trades Made
279

Market Returns: Strategy Returns:
-42.55% **+28.42%**

Difference: **+70.97%** Excess returns / month:
+17.74%



We use machine learning to create trading signals and generate consistent alpha (market outperformance) since 2020.

Strategies Summary

- 9 active models based on AI/ML
- Trades spot (live since Nov 2020) and futures (in testing, ETA Dec 2022)
- Trades highly liquid markets (BTC, ETH, BNB, etc.)
- Model input: Market data (OHLCV)
- Model output: BUY/SELL/HOLD + % portfolio
- Trade frequency: 4-10 trades per week (8-10x AUM/mo)

Technology Summary

- Developed in-house, proprietary
- Not a rule-based algo
- Cutting edge neural network architectures (LSTM, GRU, Performer (Transformer), GMLP, Filter)
- Self-learning and adaptive (uses reinforcement learning)
- Scalable to other markets
- Difficult to replicate

#	Fund / Index	Jan, 2021	Feb, 2021	Mar, 2021	Apr, 2021	May, 2021	Jun, 2021	Jul, 2021	Aug, 2021	Sep, 2021	Oct, 2021	Nov, 2021	Dec, 2021	2021
1	AI	+15.92%	+19.48%	+12.61%	+27.63%	-18.55%	+2.20%	+10.78%	+21.18%	+10.41%	+32.29%	-8.92%	+1.47%	+200.22%
2	Bitcoin (BTC)	+14.37%	+36.41%	+30.11%	-1.78%	-35.38%	-6.09%	+18.63%	+13.42%	-7.02%	+39.90%	-7.22%	-18.75%	+59.63%
3	Eurekahedge Index	+31.95%	+35.87%	+18.62%	+11.21%	-13.46%	-10.39%	+8.35%	+23.70%	-8.88%	+24.41%	-1.02%	-12.16%	+142.28%
4	ProShares BITO										+0.88%	-9.21%	-21.08%	-27.72% *
5	Rivemont	+14.4%	+25.90%	+15.30%	+6.5%	-4.10%	-20.60%	-0.60%	+27.90%	-15.50%	+25.70%	-3.70%	-20.90%	+38.52%
6	Incrementum			-0.02%	+4.85%	-6.11%	-9.95%	+2.46%	+11.80%	-6.98%	+15.66%	+0.08%	-6.68%	+2.01% *
7	15 FICAS	+29.69%	+33.67%	+9.34%	+50.46%	-26.12%	-16.67%	-3.04%	+17.04%	-14.18%	+33.93%	-12.33%	-15.97%	+68.70%
8	Crypto Alpha	+4.20%	+7.90%	-5.40%	+2.30%	+0.50%	-3.80%	+6.20%	+1.60%	+3.40%	+4.50%	+2.40%	-8.50%	+14.91%
9	Grayscale DLC	+14.87%	+27.79%	+23.56%	+4.50%	-27.13%	-9.03%	+10.36%	+29.14%	-11.56%	+40.58%	-5.23%	-17.29%	+74.51%
10	Bitwise 10	+27.26%	+27.94%	+26.32%	+6.95%	-28.89%	-10.05%	+10.65%	+30.18%	-10.13%	+41.32%	-4.77%	-20.46%	+94.98%
11	ICONOMI	+52.27%	+44.34%	+26.41%	+16.06%	-30.17%	+0.03%	+11.62%	+31.41%	-10.11%	+43.75%	+1.30%	-16.74%	+260.05%
12	Cyber Capital							+8.61%	+40.16%	-7.07%	+22.11%	+5.83%	+2.24%	+86.91% *
13	F5 Crypto												-4.73%	-4.73% *
14	Icolnic Capital	+35.80%	+29.10%	+31.10%	+16.00%	-14.20%	-5.50%	+14.60%	+20.50%	-5.00%	+27.50%	-0.30%	-10.30%	+223.37%
15	Average	+24.07%	+28.84%	+17.09%	+113.15%	-18.51%	-8.17%	+8.22%	+22.34%	-6.88%	+27.12%	-3.08%	-12.13%	+101.99%

#	Fund / Index	Jan, 2022	Feb, 2022	Mar, 2022	Apr, 2022	May, 2022	Jun, 2022	Jul, 2022	Aug, 2022	Sep, 2022	Oct, 2022	Nov, 2022	Dec, 2022	2022 *
1	AI	-12.30%	+10.52%	+12.77%	-14.71%	-3.15%	-21.54%	+35.93%						-3.71%
2	Bitcoin (BTC)	-16.70%	+12.18%	+5.41%	-17.30%	-15.56%	-37.32%	+16.95%						-49.58%
3	Eurekahedge Index	-18.98%	+3.44%	+9.00%	-15.47%	-15.96%	-19.86%	+17.97%						-38.65%
4	ProShares BITO	-16.31%	+8.84%	+8.54%	-16.55%	-17.59%	-40.94%	+27.50%						-48.81%
5	Rivemont	-15.00%	0.00%	+10.60%	-12.30%	-13.00%	-29.60%	+11.60%						-43.65%
6	Incrementum	-9.86%	+7.20%	+10.12%	-6.71%	-13.74%	-17.10%	+10.78%						-21.36%
7	15 FICAS	-16.61%	-12.59%	+2.55%	-5.99%	-27.56%	-27.38%	+13.95%						-57.87%
8	Crypto Alpha	-9.40%	-2.00%	+0.10%	-0.90%	-6.30%	-4.00%	+2.30%						-18.95%
9	Grayscale DLC	-24.28%	+9.44%	+11.37%	-17.18%	-23.68%	-41.41%	+36.16%						-53.46%
10	Bitwise 10	-21.08%	+6.53%	+11.27%	-17.23%	-23.88%	-41.35%	+36.84%						-52.70%
11	ICONOMI	-25.47%	-1.91%	+27.92%	-15.22%	-35.12%	-29.90%	+35.71%						-51.05%
12	Cyber Capital	-32.11%	-0.85%	+36.45%	-14.83%	-49.98%	-33.25%	+19.31%						-68.84%
13	F5 Crypto	-14.00%	-0.13%	+13.41%	-11.97%	-24.53%	-17.15%	+10.46%						-40.78%
14	Icoinic Capital	-21.80%	+1.90%	+24.00%	-12.60%	-19.90%	-27.00%	+31.00%						-33.85%
15	Average	-18.14%	+3.04%	+13.11%	-12.78%	-20.71%	-27.70%	+21.89%						-45.55%

Looking to launch a fund or a family office under a Singapore (MAS) regulated entity? Give us a shout at info@tradablepatterns.com.

Price	Quantity	Total BTC
59,003.69	0.0200	9.6537
59,000.60	0.0050	9.6337
59,000.49	0.0002	9.6287
58,999.76	4.0154	9.6285
58,900.00	3.0778	5.6131
58,867.67	1.9545	2.5352
58,849.10	0.0191	0.5806
58,846.99	0.1219	0.5614
58,846.98	0.0750	0.4395
58,836.37	0.0196	0.3645
58,821.74	0.0202	0.3449
58,788.47	0.0408	0.3247
58,769.79	0.0837	0.2839
58,763.99	0.2002	0.2002
Spread		\$33.70
58,730.29	0.0837	0.0837
58,719.92	0.2002	0.2839
58,697.04	0.0200	0.3039
58,690.69	0.1553	0.4592
58,684.91	0.0219	0.4811
58,684.90	0.0198	0.5009
58,661.34	0.0410	0.5419
58,661.05	0.0002	0.5421
58,660.40	0.0002	0.5424
58,659.56	0.0002	0.5426
58,658.27	0.0025	0.5451
58,657.56	0.0004	0.5455
58,654.49	0.0010	0.5465
58,654.25	0.0100	0.5565

Looking to minimize slippage on larger sized crypto trades through an OTC brokerage? Write to info@tradablepatterns.com



CRYPTO WEEKLY OUTLOOK

Feb 13, 2022

TOP50's TOP10 (BTCUSD, XTZUSD, XRPUSD, ETHUSD, FTTUSD, CROUSD, SANDUSD, MANAUSD, AVAXUSD, TRXUSD)

BITCOIN (BTCUSD) Daily



Darren Chu, CFA
 Founder
 Tradable Patterns



Join the world's largest asset manager and 2 of the world's 5 largest (and 5 of the 10 largest) hedge funds by AUM as daily readers of [Tradable Patterns](#) technical analysis. As seen on Bloomberg, Refinitiv, Factset, Interactive Brokers, readers include global top 10 investment banks. If you represent an institutional investor or potential distribution partner, write to info@tradablepatterns.com to request Bloomberg, Refinitiv and Factset readership reports.



Bloomberg

REFINITIV

FACTSET

Crypto Weekly Outlook offers technical Analysis for 10 coins from the top 50 in market cap that are most interesting for the coming week from a TA standpoint.

If you represent an institution and are interested in Fundamental analysis on ETHUSD, BTCUSD and on the industry, please write to info@tradablepatterns.com for the institutional edition available each last Sunday of each month.

[Sample from report \(Nov 28, 2021\) right before a deepening in the crypto market correction.](#)



CRYPTO WEEKLY OUTLOOK

ETHEREUM + INDUSTRY FUNDAMENTALS + BITCOIN + RIPPLE

ETHEREUM (ETHUSD)

Nov 28, 2021

Ethereum (ETHUSD) is deepening in its correction, and appears poised to slide further this week. Significantly, ETHUSD is at high risk of exceeding the September pullback in magnitude, following in Bitcoin (BTCUSD)'s footsteps. The current 2 week downturn is testing the psychologically key 4k whole figure level, and appears to be gravitating towards an uptrend support line (on the weekly chart) connecting the July and September lows. Odds are elevated for a test of the 50% Fib retrace of the July to October rally sometime in December. ETHUSD's correlation to BTCUSD (on a weekly chart) is at 0.95, near the upper end of its 5 year range. [Congratulations to readers alerted August 1st of the completion of the major June-July bottom](#), and to those who heeded [the warning May 16th of the major top forming](#). The weekly RSI, Stochastics and MACD are tiring, weighing on the attempting to bottom daily RSI and Stochastics. I am likely going to remain flat this week but would consider going long in the 3000-3300 range, targeting a 3000-4000 range for December.

Weekly (Liquid)



Darren Chu, CFA
Founder
Tradable Patterns



Join the world's largest asset manager and 2 of the world's 5 largest (and 5 of the 10 largest) hedge funds by AUM as daily readers of [Tradable Patterns' technical analysis](#). As seen on Bloomberg, Refinitiv, Factset, Interactive Brokers, readers include global top 10 investment banks. **If you represent an institutional investor or potential distribution partner, write to info@tradablepatterns.com to request Bloomberg, Refinitiv and Factset readership reports.**





COFFEE DAILY

Jan 2, 2022

ROBUSTA COFFEE (RC)

Robusta Coffee (RC) edged lower Friday, closing 2021 just below the fresh year high. Significantly, with the new year beginning, odds are high after last year's strong bull market for RC to at least see a healthy correction. RC is bumping up against upchannel resistance (on the weekly chart), with some hesitation late last week as seen by the 2 consecutive daily Dojis. Any test of the psychologically key 2500 whole figure level will likely have to wait until at least February. The weekly and daily RSI, Stochastics and MACD are rallying or consolidating recent gains. I am looking at entering long in the green zone of the daily chart (in the ~2270-2330 range), targeting the red zone (of the daily chart in the ~2400-2450 range) for Friday. The amber/yellow zone (in the ~2190-2240 range) is where I might place a stop if I was a swing trader (although in my personal account with which I seldom hold overnight I sometimes set my stops tighter).

Weekly/Daily/4hr



Darren Chu, CFA
Founder
Tradable Patterns



Join the world's largest asset manager and 2 of the world's 5 largest (and 5 of the 10 largest) hedge funds by AUM as daily readers of [Tradable Patterns'](https://tradablepatterns.com) technical analysis. As seen on Bloomberg, Refinitiv, Factset, Interactive Brokers, readers include global top 10 investment banks. If you represent an institutional investor or potential distribution partner, write to info@tradablepatterns.com to request Bloomberg, Refinitiv and Factset readership reports.



Bloomberg

REFINITIV 

FACTSET

FINANCIAL TIMES

ALPHAVILLE



 InteractiveBrokers

barchart

Get your coffee today? You can now enjoy your brew with Coffee Daily - Tradable Patterns' Arabica and Robusta Coffee Futures technical analysis newsletter, published Monday to Friday before the London open. Write to info@tradablepatterns.com for pricing details and sample reports.

For less experienced traders, tutorials and workshops are offered online and throughout Southeast Asia.

Tradable Patterns content does not constitute an advisory and does not make recommendations, but can supplement your own analysis. Please do your own due diligence ahead of any trades.

This communication is issued by Tradable Patterns and/or affiliates of Tradable Patterns. This is not a personal recommendation, nor an offer to buy or sell nor a solicitation to buy or sell any securities, investment products or other financial instruments or services. This material is distributed for general informational and educational purposes only and is not intended to constitute legal, tax, accounting or investment advice.

The statements in this document shall not be considered as an objective or independent explanation of the matters. Please note that this document (a) has not been prepared in accordance with legal requirements designed to promote the independence of investment research, and (b) is not subject to any prohibition on dealing ahead of the dissemination or publication of investment research.

Tradable Patterns 2021. All rights reserved.

Intended for recipient only and not for further distribution without the consent of Tradable Patterns.