



FALL 2020

A Guide for Families





INTRODUCTION

This guidebook is intended to provide you with information to support your student's success as we begin the 2020-2021 school year. Thank you for the flexibility and resilience you have shown since the spring. And thank you for being a part of the BSD community!

Additional detail on all aspects of reopening can be found on our [Planning for Fall](https://bsd405.org/planning-for-fall/) website page.

LINKS

<https://bsd405.org/planning-for-fall/>

<https://bsd405.org/planning-for-fall/commitments-goals-assumptions/>



FALL PLANNING COMMITMENTS

Adopted June 2, 2020

Protect Health

Educate each and every student

Engage and support stakeholders

Help meet essential need

THE STUDENT EXPERIENCE

REMOTE AND HYBRID LEARNING

BSD will begin the year fully remote. We are closely monitoring information regarding COVID-19 infection rates and will provide regular updates. It is our most fervent hope to bring students back for in-person learning as soon as possible. Our decisions will be informed by public health data and guided by Washington's [Decision Tree for The Provision of In-Person Learning](#). As we develop a detailed plan for the transition to a hybrid in-person learning model, we will share more information with families.

TECHNOLOGY ACCESS AND SUPPORT

Every student will be given a district-issued device and will be assured connectivity. K-1 grades will receive iPads and grades 2 – 12 will receive Windows laptops. Students who do not have reliable access to the internet at home will be provided a hot spot. The district is also offering a series of technology webinars for students and families. You can learn more at [Technology Support for Students and Families](#).

IN-PERSON SERVICES

Some students, including those receiving special education services, those who are emerging bilingual speakers, and those who received an incomplete in spring of 2020, will be prioritized to receive in-person instruction during the temporary remote phase. We will continue to work with families and students to expand in-person services as we are able.

LINKS

<https://www.doh.wa.gov/Portals/1/Documents/1600/coronavirus/DecisionTree-K12schools.pdf>

<https://bsd405.org/departments/district-technology/tech-support-students-families/>



STUDENT SCHEDULES

Our aim is to provide a rich educational experience for all students in any learning environment, whether remote, hybrid, or fully in-person. To achieve this, we have studied and adopted best practices in remote learning. Student schedules have been built with attention to small group and one-on-one interaction, reasonable limits on screen time depending on age, and an extra emphasis on students' social-emotional well-being.

During our initial remote learning phase, the typical elementary student schedule will be as follows. The original [school calendar](#) remains in place.

Elementary Student Schedule	
Monday, Tuesday, Thursday, Friday	Wednesday
Whole Class Instructional Time (a.m.) 3 hours: Instruction with teacher and peers, including breaks and specialist time Age-appropriate instructional design and strategies to meet student need, including: <ul style="list-style-type: none"> • Live instruction with the classroom teacher (whole class/small group) • Live instruction with Specialists (Art, Music, PE, Library) • Student services (Special Education, ELL, Interventionists) 	Individual/Small Group and Asynchronous Time Community Programming School-wide assemblies Social-emotional learning Family Connection/Engagement PLC/PD time
Example Content: <ul style="list-style-type: none"> • Social emotional learning • Literacy • Math • Science • Social Studies • Art • Music • PE • Library 	
Lunch and Recess (1 hour)	
Individual/Small Group and Asynchronous Time (p.m.) 90 minutes: Educators work with small groups (Each student or small group meets 15-30 minutes) <ul style="list-style-type: none"> • Individual or small group instruction with the teacher, support staff, and/or specialist • Independent work on assignments or practice • Student services (Special Education, ELL, Interventionists) 	
Example Content: <ul style="list-style-type: none"> • Small group instruction with teacher • Individual or small group instruction with support staff • Literacy or math software activities • Science or social studies independent activities • Small group activities with specialists (Art, Music, PE, Library) • Computer science • Independent practice 	

Schedules for hybrid learning will be released as we move closer to transitioning.



ATTENDANCE

Attendance will be taken daily in remote and hybrid settings. For secondary students, attendance will be taken for each period. In September, our focus will be to connect with families to ensure students are engaged. In October, we will resume our normal practices for reporting and excusing absences. Please inform your school in a timely manner if your student will not be in class; expect a call if your student was absent and we have not heard from you.

GRADING & ASSESSMENT

Learning Standards: Our fundamental commitment is to ensure each student receives a full year of learning that meets BSD's standards for rigor and excellence. Student work will be aligned to learning standards across grade levels and content areas. To ensure teachers have more flexibility to meet the needs of students in a remote setting, time is set aside in our schedules for teachers to meet with students in small groups or one-on-one to support their individual learning needs.

Assessment: At the start of the year, students will be assessed to identify whether they may benefit from additional supports or advanced work. Throughout the year, students will be provided multiple opportunities and formats to demonstrate learning. This year, students will be able to re-take assessments and late work will be fully recognized to demonstrate proficiency.

Grading: Elementary students will receive progress reports twice per year including a 1-4 scale and teacher comments. Parent conferences will occur in October. Secondary students will receive quarterly progress reports with letter grades A-F and teacher comments. Parents can track students' progress in ParentVUE.



STUDENT SCHEDULES

During our initial remote learning phase, the typical secondary school schedule will be as follows. The original school calendar remains in place.

Temporary Remote Learning (Includes BSD Virtual) Schedule

7:45 Start Time (Highland, Tillicum, Chinook)

Time	Monday	Tuesday	Wednesday			Thursday	Friday
			Time	Week 1	Week 2		
7:45 – 8:35	Period 1	Period 5	7:45 – 8:25	Period 1	Period 5	Period 1	Period 5
8:45 – 9:35	Period 2	Period 6	8:30 – 9:10	Period 2	Period 6	Period 2	Period 6
9:45 – 10:35	Period 3	Period 7	9:15 – 9:55	Period 3	Period 7	Period 3	Period 7
10:45 – 11:35	Period 4	Period 8*	10:00 – 10:40	Period 4	Community	Period 4	Period 8*
11:45 – 12:15	Lunch	Lunch	10:45 – 11:45	Asynchronous	Asynchronous	Lunch	Lunch
12:15 – 12:55	Period 1	Period 5				Period 1	Period 5
1:00 – 1:40	Period 2	Period 6				Period 2	Period 6
1:45 – 2:25	Period 3	Period 7				Period 3	Period 7
2:30 – 3:10	Period 4	Period 8*				Period 4	Period 8*

Synchronous learning/Asynchronous learning

8:00 Start Time (Bellevue, Interlake, Newport, Sammamish, Big Picture, International)

Time	Monday	Tuesday	Wednesday			Thursday	Friday
			Time	Week 1	Week 2		
7:00 – 7:50	Period 0*		7:15 – 7:55	Period 0*		Period 0*	
8:00 – 8:50	Period 1	Period 5	8:00 – 8:40	Period 1	Period 5	Period 1	Period 5
9:00 – 9:50	Period 2	Period 6	8:45 – 9:25	Period 2	Period 6	Period 2	Period 6
10:00 – 10:50	Period 3	Period 7	9:30 – 10:10	Period 3	Period 7	Period 3	Period 7
11:00 – 11:50	Period 4	Period 8*	10:15 – 10:55	Period 4	Community	Period 4	Period 8*
12:00 – 12:30	Lunch	Lunch	11:00 – 12:00	Asynchronous	Asynchronous	Lunch	Lunch
12:30 – 1:10	Period 1	Period 5				Period 1	Period 5
1:15 – 1:55	Period 2	Period 6				Period 2	Period 6
2:00 – 2:40	Period 3	Period 7				Period 3	Period 7
2:45 – 3:25	Period 4	Period 8*				Period 4	Period 8*

Synchronous learning/Asynchronous learning

*Period 0 – 7:00 – 7:50 - Monday, Thursday, and 7:15 – 7:55 Wednesday (Week 1) – 3-Hour WANIC Skill Center Programs ONLY

8:30 Start Time (Odle, Tyee)

Time	Monday	Tuesday	Wednesday			Thursday	Friday
			Time	Week 1	Week 2		
8:30 – 9:20	Period 1	Period 5	8:30 – 9:10	Period 1	Period 5	Period 1	Period 5
9:30 – 10:20	Period 2	Period 6	9:15 – 9:55	Period 2	Period 6	Period 2	Period 6
10:30 – 11:20	Period 3	Period 7	10:00 – 10:40	Period 3	Period 7	Period 3	Period 7
11:30 – 12:20	Period 4	Period 8*	10:45 – 11:25	Period 4	Community	Period 4	Period 8*
12:30 – 1:00	Lunch	Lunch	11:30 – 12:30	Asynchronous	Asynchronous	Lunch	Lunch
1:00 – 1:40	Period 1	Period 5				Period 1	Period 5
1:45 – 2:25	Period 2	Period 6				Period 2	Period 6
2:30 – 3:10	Period 3	Period 7				Period 3	Period 7
3:15 – 3:55	Period 4	Period 8*				Period 4	Period 8*

Synchronous learning/Asynchronous learning

Schedules for hybrid learning will be released as we move closer to transitioning.

LINK: <https://bsd405.org/about/calendar/>



TRANSITIONING TO HYBRID LEARNING

Within the first six (6) weeks of school, by October 15, 2020, the district will communicate if and when we can transition to hybrid learning. Our goal is to bring students back for in-person learning as soon as possible. This decision will be informed by public health data and guided by the state of Washington's [Decision Tree for The Provision of In-Person Learning](#).

To establish safe learning conditions, our community should be well below 75 cases per 100,000 residents for 14 consecutive days prior to bringing students back for in-person learning. We can all contribute to making this a reality by wearing masks, washing our hands, and practicing physical distancing.

We will take a phased approach to transitioning to a hybrid learning model. Our youngest learners and students furthest from educational justice will take priority. Details on this process will be communicated to families once our remote start is underway.

LINK

<https://www.doh.wa.gov/Portals/1/Documents/1600/coronavirus/DecisionTree-K12schools.pdf>



PRINCIPAL COFFEES

Principals will host virtual parent coffee sessions monthly to share information and seek feedback. These sessions will be recorded for those unable to attend.

FEEDBACK LOOPS

BSD is in the process of establishing robust feedback loops with students, staff, and families this fall to assess what is working and to gather ideas for improvement. In addition, we will continue to utilize our website, email, phone calls, text, social media, and our Family Connection Centers to share information with families. We will continue to translate communications into Chinese and Spanish.

LET'S TALK

BSD's "Let's Talk" customer service tool is always available for families to submit questions and concerns for school staff to respond to in a timely manner.

LINK

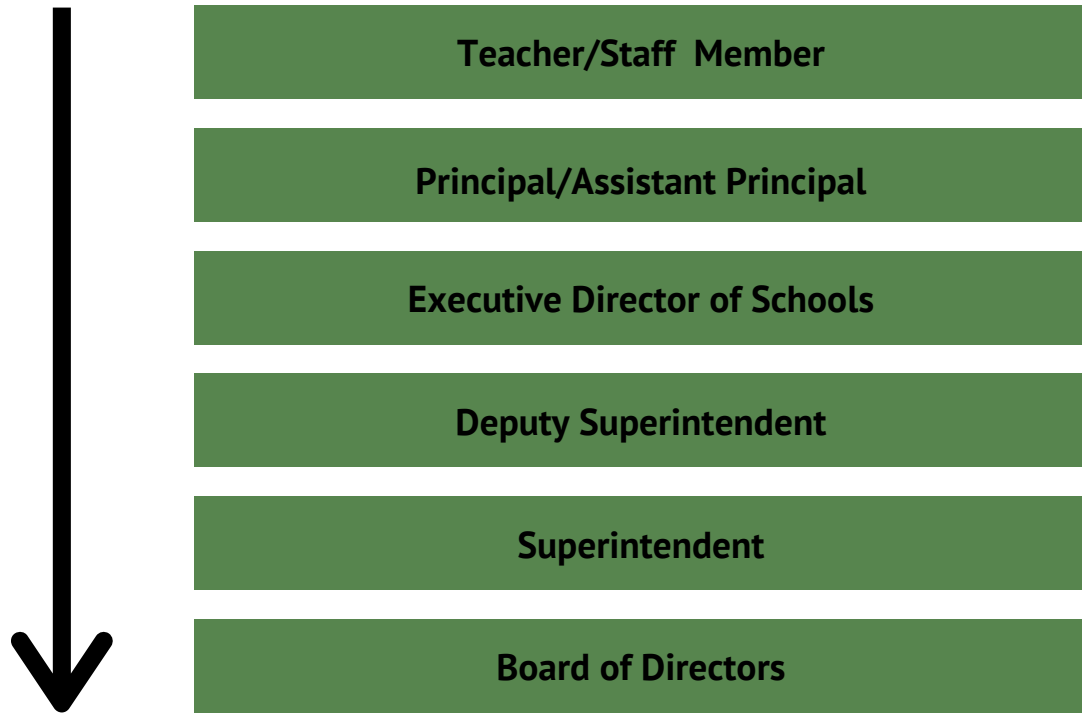
<https://bsd405.org/planning-for-fall/contact-the-planning-for-fall-team/>

TWO-WAY COMMUNICATION



HELP AND SUPPORT

To address a concern, start closest to the situation with the person who has the most information. If additional people are needed to reach a resolution, move along the chain of communication.



We recommend first talking with the teacher or staff member closest to the concern to promote direct and open conversation so problems can be resolved quickly and respectfully.





WHERE CAN I FIND...

FAMILY RESOURCES

How We Can Help	Who to Call	Contact Info
Technology Questions	Tech Support	(425) 456-4321 parenthelp@bsd405.org studenthelp@bsd405.org
Basic Needs	Family Connection Centers (English and Spanish)	Sammamish HS (253) 456-4321 Lake Hills Elem (425) 389-7545 Stevenson Ele (425) 456-6005
Mental Health Services	Counseling Hotline	(425) 456-4445
General Information		(425) 456-4000 pubinfo@bsd405.org

ADDITIONAL INFORMATION

For details on athletics, electives, language immersion, special education and other topics, please visit the [FAQ section](https://bsd405.org/planning-for-fall/faq) of the district's website (<https://bsd405.org/planning-for-fall/faq>).



MEALS2GO

With school starting remotely, we want to ensure that children continue to have access to the nutrition they need to succeed. We have designed a grab & go breakfast and lunch program for families. Meals will be available beginning Wednesday, September 2 for any child 18 years and younger from seven (7) regional locations.

Meals are provided at no cost thanks to the extension of a nationwide waiver authorized by USDA. This waiver will be in effect through as late as December 31, 2020, dependent on available funding.

Families are still encouraged to complete an application for free or reduced-price school meals. The 2020-21 application can be found on our Free & Reduced Priced Meals page. Families must reapply each year.

Additional information, including weekly menus, are available on the Nutrition Services web page. For questions or assistance, contact Nutrition Services at (425) 456-4507 between 7:00am – 3:30 pm.

NOTE: If your student qualifies for free or reduced-price school meals, they may be eligible for discounted fees or other services. Complete Part 5 of the online application (Sharing Information) to give permission to Nutrition Services to share school meal eligibility information with other school programs.

LINKS

<https://bsd405.org/services/nutrition-services/meals2go/#times>

<https://bsd405.org/services/nutrition-services/free-reduced/>

<https://bsd405.org/services/nutrition-services/meals2go/>



**"OUR COMMITMENT
MUST BE TO A JUST
AND EQUITABLE
EDUCATION FOR
ALL."**

IVAN DURAN, SUPERINTENDENT