



P U Y A L L U P

S C H O O L D I S T R I C T

A Tradition of Excellence

Reopening Puyallup Schools

August 17, 2020

BACKGROUND

- Washington State Governor ordered schools closed on March 17, 2020 because of COVID-19
- Puyallup School District began continuous learning for students and families on March 19, 2020
- Puyallup School District's calendar was modified and the last day for students is June 19, 2020
- OSPI directed school districts to plan for a fall opening
- Administrative designee commissioned the formation of an Instructional Model Taskforce and a Health & Safety Taskforce
- Board approved continued planning for Continuous Learning 2.0 and Hybrid A/B with Continuous Learning 2.0
- Tacoma Pierce County Health Department announced on July 23, 2020, that it is not safe to open schools in the fall
- Superintendent Polm informs students, staff, and families that the district will implement Continuous Learning 2.0 on September 3, 2020 and reassess after six – eight weeks

GOALS AND OBJECTIVES

- Examine and design implementation plans for two non-traditional instructional models:
 - Continuous (distance) learning 2.0
 - Hybrid (in-person with continuous learning)
- Develop common expectations for grade levels and content areas
- Align instructional models with guidance from Washington State Department of Health, Tacoma Pierce County Health Department, Office of the Governor, and OSPI
- Ensure the priorities and values of health and safety, equity and supports, rigor, partnerships and collaboration, professional learning, and communication.



CONTINUOUS LEARNING 2.0

INSTRUCTION OCCURS REMOTELY, BOTH LIVE AND RECORDED, WITH SUPPORTS AND MODIFICATIONS AS NEEDED

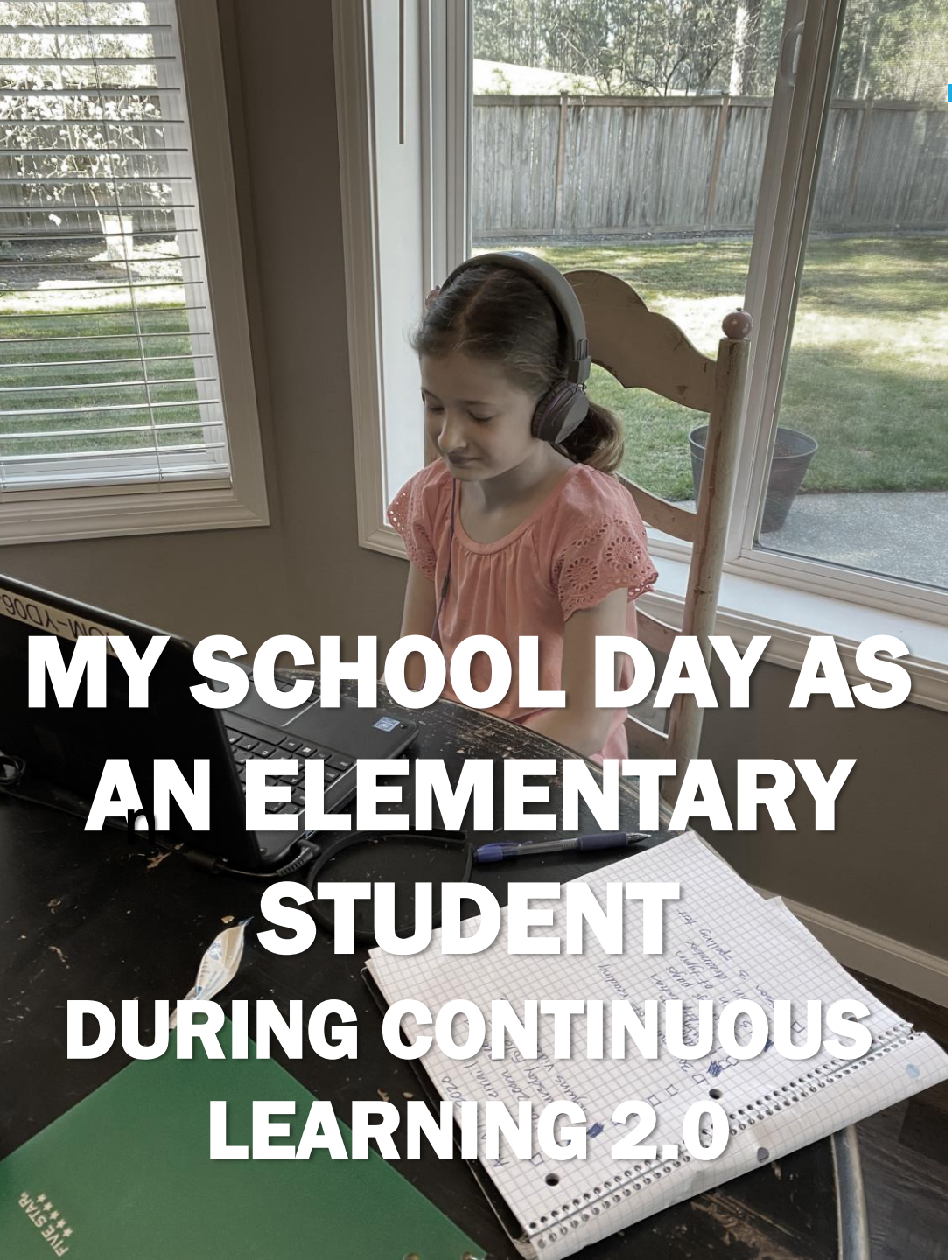
DAILY LIVE INSTRUCTION

DAILY SOCIAL-EMOTIONAL

DAILY SKILL PRACTICE

WEEKLY FEEDBACK





MY SCHOOL DAY AS AN ELEMENTARY STUDENT DURING CONTINUOUS LEARNING 2.0

Class Meeting

- School starts at 8:30!
- My teacher goes over the assignments for the day and reviews the work from the previous day.
- We do a class check-in and I get to know my teacher and classmates.
- I engage in social-emotional learning through Second Step lessons.

Learning Blocks

- I will participate in live whole group lessons on Microsoft Teams throughout the day. I may also attend small group lessons.
- ELA and Math will be taught whole group and/or small group daily. Science and Social Studies will be taught on alternating days/weeks.
- Small group sessions may include time with my teacher or interventionist groups (Special Education, LAP, Title, EL, OT, PT, Speech, Vision, O&M)
- I will use time between live sessions to complete self-guided tasks as outlined on my Learning Plan.

Lunch & Recess

- Lunch can be picked up weekly from school or I can make something we have at home.
- I go outside and play, or I have choice time to do something other than schoolwork.

Specialists


- My music, librarian, or PE teacher will teach a live lesson on Microsoft Teams.

Review of Learning and Next Steps

- I watch recorded lessons that I was not able to attend live.
- I complete and check off my learning tasks on my Learning Plan.
- I may send my teacher an email with any questions I have.
- I will turn off my laptop and plug it in to charge in a safe place.

CONTENT DELIVERY – ELEMENTARY EXPECTATIONS

- Resource, EL, LAP, Title, OT, PT, Speech – will be determined by the team.
- PE, Library, Music, Orchestra, Band – Recorded or live 20-30 minute sessions once per week that follow master schedule. Option to hold grade level sessions.
- Each Specialist and Interventionist will have their own Schoology Course that the homeroom teacher links to in their weekly communication and daily folders.



MY SCHOOL DAY AS A SECONDARY STUDENT DURING CONTINUOUS LEARNING 2.0

Morning Routine

- Review my Schoology account for the day's schedule and assignments

Block Schedule

- I am enrolled in six classes
- I attend all my classes through Microsoft Teams or prerecorded lessons
- My teacher spends time creating relationships by getting to know us as individuals
- I attend Home Room on Mondays where time is spent on social-emotional learning. Social emotional learning is supported throughout the school week in my classes
- I submit my assignments from my prerecorded lessons

End of the Day Routines

- I review my remote learning assignments in Schoology.
- I complete my assignments and submit them to my teacher.
- I send my teachers a Schoology message/email with any questions I have about my schoolwork.

SECONDARY SCHEDULE

Aligning Junior High and High School schedules provides consistency across the district.

Monday	Tuesday/Thursday		Wednesday/Friday	
Staff Duties (7:30-10:00)	Staff Duties	7:30-9:00	Staff Duties	7:30-9:00
School Culture (10:00-11:00) <ul style="list-style-type: none"> • Homeroom/Social Emotional Learning • Student News • Assemblies • Recognition • Community Building 	1 st Period	9:00-9:50	4 th Period	9:00-9:50
	2 nd Period	10:00-10:50	5 th Period	10:00-10:50
	3 rd Period	11:00-11:50	6 th Period	11:00-11:50
	Lunch	12:00-12:30	Lunch	12:00-12:30
	4 th Period	12:30-12:55	1 st Period	12:30-12:55
Lunch (11:00-11:30)	5 th Period	1:00-1:25	2 nd Period	1:00-1:25
Office Hours (11:30-12:00)	6 th Period	1:30-1:55	3 rd Period	1:30-1:55
Student Self-guided Learning and Optional Class Meetings for AP, SPED, & ELL, etc. (12:00-3:00)	Office Hours	2:00-2:30	Office Hours	2:00-2:30
	Staff Duties	2:30-3:00	Staff Duties	2:30-3:00

CONTINUOUS (DISTANCE) LEARNING 2.0

HEALTH & SAFETY

There are limited health and safety concerns regarding Continuous Learning 2.0

SOCIAL AND EMOTIONAL SUPPORTS

- School guidance counselors
- Second Step curriculum
- Embedded social emotional learning
- Prevention/Intervention services
- Community mental health partners

HEALTH AND SAFETY FOR LEARNING 2.0

- Daily health checks for staff
- Daily health checks for select students
- Transitions:
 - Hallways, commons, cafeterias, flow of students
- Cleaning and disinfecting
- Classroom configuration:
 - Six feet distancing and capacity
- Health Room vs. Quarantine Space

HYBRID A/B WITH CONTINUOUS LEARNING

**STUDENT GROUPS HAVE SAFE ACCESS TO IN-PERSON INSTRUCTION AND
SUPPORTS SOME DAYS, AND REMOTE LEARNING OTHER DAYS**



MY SCHOOL DAY AS AN ELEMENTARY STUDENT DURING HYBRID A/B MODEL

Morning

- My family checks me for signs of COVID. If I don't have symptoms or a fever, I get ready for school.

Bus Pick-up

- I wear my mask
- Bus windows are open

Arrival

- I enter my designated entrance, staying six feet apart from other students.
- I clean my hands with hand sanitizer.

Class Meeting

- My classmates who are learning at home today join us on TEAMS.

Learning Blocks

- We are introduced to a new topic of study.

Lunch & Recess

- Lunch is delivered, and I eat at my desk.
- Our class takes a special route to the playground so we don't pass other students.

Afternoon Learning Block

- Math time! We each get a plastic bag of manipulatives--we don't share. We share our thinking using white boards and chart paper so that others can see it from their seats.

Specialist

- My music, librarian, or PE teacher comes to my classroom.

End of the Day Routines

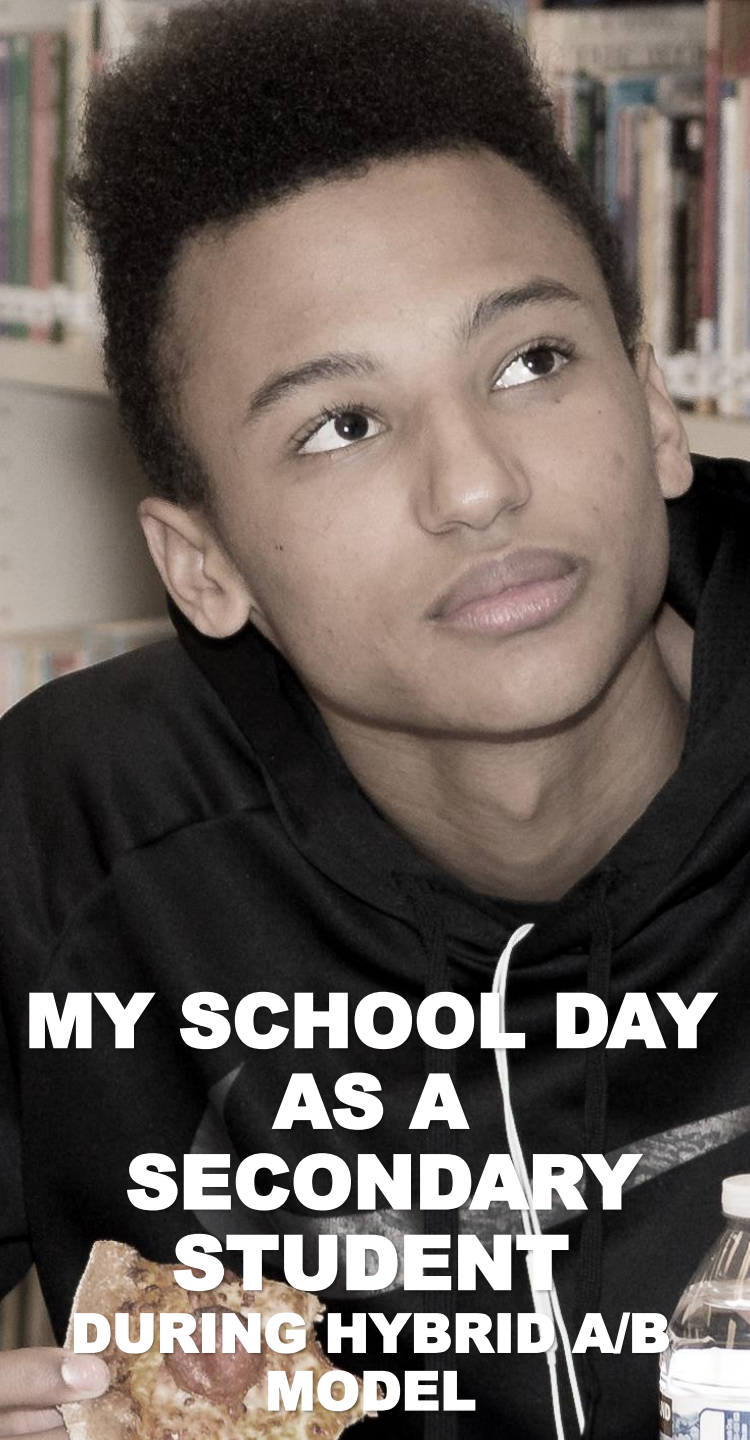
- My teacher reviews our remote learning assignments
- My teacher makes sure I understand the practice tasks and how to find what I need online
- My teacher reminds me about office hours and extra help
- I ask questions to make sure I understand

Heading Home

- I exit the building at the same place I came in this morning.
- We load the bus back to front, just like we did in the morning, and sit as far apart as possible. I share a seat with my brother and sister.

MY SCHOOL KEEPS ME SAFE ALL-DAY LONG

- Social and emotional learning focused
- Supportive instruction & practice on safety routines are recognized and monitored
- Small groups (15:1)
- Identified spaces for students and belongings
- Clear signage and procedure markings
- Frequent cleaning of common areas and supplies



MY SCHOOL DAY AS A SECONDARY STUDENT DURING HYBRID A/B MODEL

Arrival

- I enter through my designated entrance.
- I go through the screening process.
- I clean my hands with hand sanitizer.
- I make sure my mask is on correctly.

Six Period day

- I have six classes.
- My teacher reviews any initial content learned (from at home learning) and supports that by providing opportunities to apply and create content to the learning.
- I bring my laptop to school to keep all my work in one place and I am able to access my online curriculum.
- Our assignments and resources are all available on Schoology, which makes it easier to continue my learning when I am at home later in the week.
- We learn together in groups and activities, but use social distancing to stay apart.
- At the end of each class, my teacher makes sure we know the learning goals for the week and when we can access help. My teacher helps me set goals for at-home learning, and we always check calendars so we know when to log into Teams to join classes later in the week for mini-lessons.
- Each of our teachers gets to know us because there are only 15 students in each class. We spend time each week checking in on our High School and Beyond Plans and setting personal and academic goals each week.

Lunch & Passing

- We have staggered passing periods and small group lunches to stay apart.

End of each Period Routines

- My teacher reviews our remote learning assignments.
- My teacher makes sure I understand the practice tasks and how to find what I need online.
- My teacher reminds me about office hours and extra help.
- I ask question to make sure I understand.

MY SCHOOL KEEPS ME SAFE ALL-DAY LONG

- Social and emotional learning focused
- Supportive instruction & practice on safety routines are recognized and monitored
- Small groups (15:1)
- Identified spaces for students and belongings
- Clear signage and procedure markings
- Frequent cleaning of common areas and supplies

Monday	Tuesday	Wednesday	Thursday	Friday
<p>Traditional Late Start Time Block: Professional Learning & Staff Meetings.</p> <p>Remaining Time: PLC/ Planning/ Asynchronous Material Creation</p>	A Group Present on site	B Group Present on site	A Group Present on site	B Group Present on site

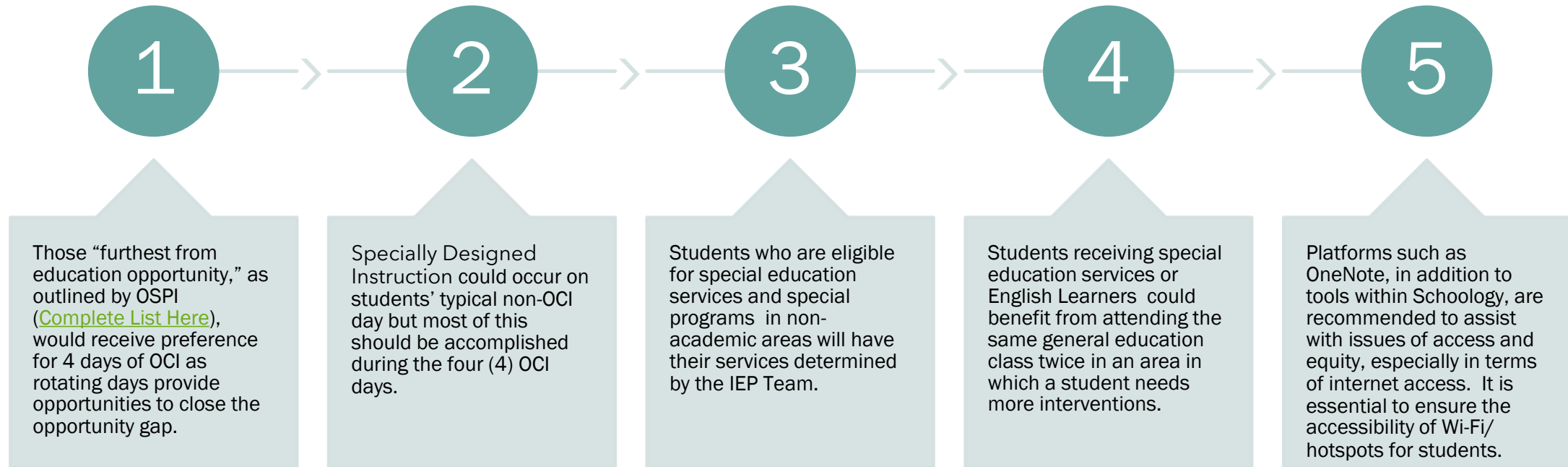
HYBRID A/B MODEL

With this model students have three remote learning days and two On Campus Instruction (OCI) days.

CONTINUOUS LEARNING 2.0 ACCOMPANYING HYBRID A/B MODEL

- Elementary
 - Focus is to re-teach and reinforce skills that have already been taught in person.
 - Mondays – small groups live/recorded on Microsoft Teams, focused on Super Standards
 - Off-Campus Tuesday-Friday
 - Activities to follow CL2.0 Plan
- Secondary
 - Reinforcing skills taught live
 - Learning lower level content (Bloom's Taxonomy)
 - Mondays- Teachers plan & students' practice

EQUITY AND INTERVENTION



HYBRID: FULL DAYS A/B- TWO DAYS A WEEK

HEALTH & SAFETY

- Daily Health Checks
- Transitions: Hallways, commons, cafeterias, flow of students/staff
- Cleaning and disinfecting at secondary level between class periods
- Classroom Configuration: Six feet distancing and capacity
- Health Room vs. Quarantine Space
 - Staffing and Space challenges
- Food Service Model: Meals will be served

HYBRID: FULL DAYS A/B- TWO DAYS A WEEK

HEALTH & SAFETY

- Transportation
 - Special Ed routing: additional routes
 - Increased runs needed to maintain social distancing (50% seat capacity-40 elementary students, 26 secondary)
 - Communication with families on schedule
- Drop off/Pickup

HEALTH & SAFETY ELEMENTARY SCHOOL CLASSROOM CONFIGURATION





HEALTH & SAFETY JUNIOR HIGH SCHOOL CLASSROOM CONFIGURATION

HEALTH & SAFETY HIGH SCHOOL CLASSROOM CONFIGURATION



QUESTIONS





P U Y A L L U P

S C H O O L D I S T R I C T

A Tradition of Excellence

Consideration for Action

RESOLUTION 255 2019-20

The Equity and Instructional Leadership Department requests that the board of directors for the Puyallup School District considers taking action on adopting Resolution 255 2019-20 – District Reopening Plan.